



East Milton Square Parking & Access Study

Presented to
**Business & Citizens Advisory Committee
(BCAC)**

October 20, 2010



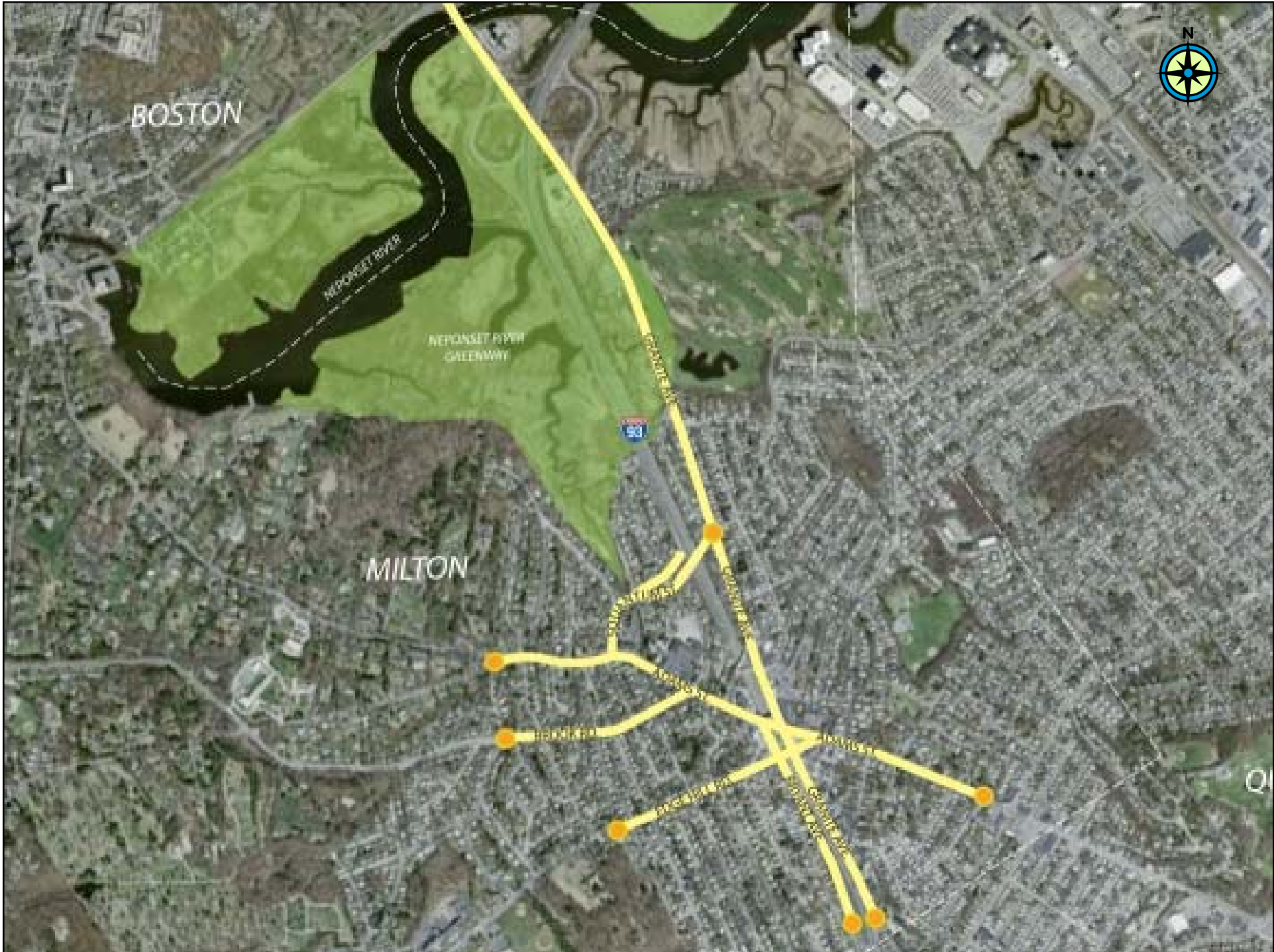
Howard/Stein-Hudson Associates, Inc.
CREATIVE SOLUTIONS • EFFECTIVE PARTNERING ®

September 20, 2010

Topics for Tonight's Presentation



- **Study area & goals**
- **Project schedule & work to date**
- **Evaluation criteria**
- **Next steps**
- **Q&A Session**



BOSTON

NEPONSET RIVER

NEPONSET RIVER GREENWAY

I-93

MILTON



Project Goals



- **Develop 3-5 options for the improvement of East Milton Square**
- **The Town will select the option for implementation.**
 - *Includes substantial BCAC input*
- **The selected option may be:**
 - A mix of several options
 - A step along a path of cumulative options

Project Schedule



- **Data collection halted in July 2010 for MWRA work.**
- **Remaining field work:**
 - Parking turnover study
 - Recount of Adams Street/Centre Street
- **HSH is in contact with MWRA:**
 - Week of November 29 for remaining field work
 - MWRA to alert HSH if some or all collection can occur sooner

Work since July 14, 2010 (Last BCAC)



- **Reduction of parking inventory data**
- **Continued outreach to the community**
- **Development of evaluation criteria**



- No Parking
- Public Parking
- Handicapped
- MBTA Bus
- Service Area

1. Service Zone Only except Sunday
2. 2-hr. Parking
3. 2-hr. Parking except 4:00-6:00 PM
4. Service Zone Only
5. 1-hr. Parking 6:30 AM-10:00 PM
6. 2-hr. Parking 7:00 AM-7:00 PM
7. 30-minute Parking 6:00 AM-7:00 PM, except Sunday/Holiday
8. 1-hr. Parking
9. 2-hr. Parking 6:00 AM-7:00 PM, except Sunday/Holiday
10. 30-minute Parking

Parking in East Milton Square



- **Widely-held perception of inadequate parking.**
- **Some early, anecdotal data on parking in hand.**
- **A range of both short- and long-term parking solutions are available.**
- **Any solution adopted will be driven by study data.**

Evaluation Criteria - *What would success look like?*



- **Provide demonstrable transportation benefits.**
- **Address local concerns regarding parking.**
- **Improve safety in East Milton Square for all users.**

Evaluation Criteria - *What would success look like?*



- **Protect surrounding residential areas.**
- **Provide demonstrable environmental benefits.**
- **Improve aesthetics and activate open spaces.**

Evaluation Criteria - *What would success look like?*



- **Foster local business.**
- **Take into account future land uses.**
- **Balance cost with benefit.**
- **Offer options that lend themselves to a phased approach.**

Next Steps – Upcoming Work



■ November:

- Initial community meeting (first of three)
- Recount of Adams Street/Centre Street intersection
- Parking turnover study

■ December (and into 2011):

- Development of alternatives
- Preliminary engineering
- Next meeting of the BCAC – 12/15/10

Please save the date.

Question & Answer Session



September 20, 2010