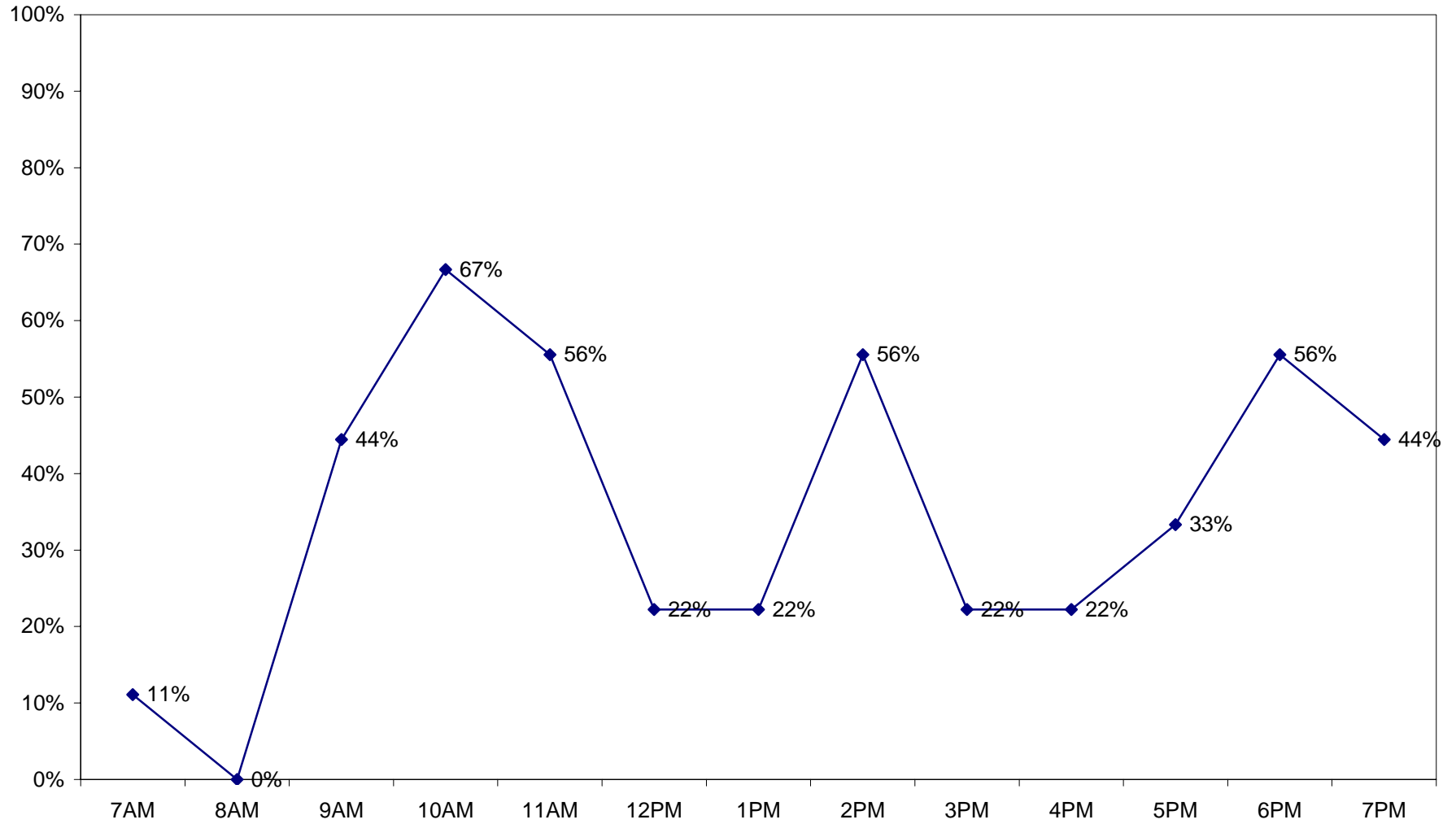
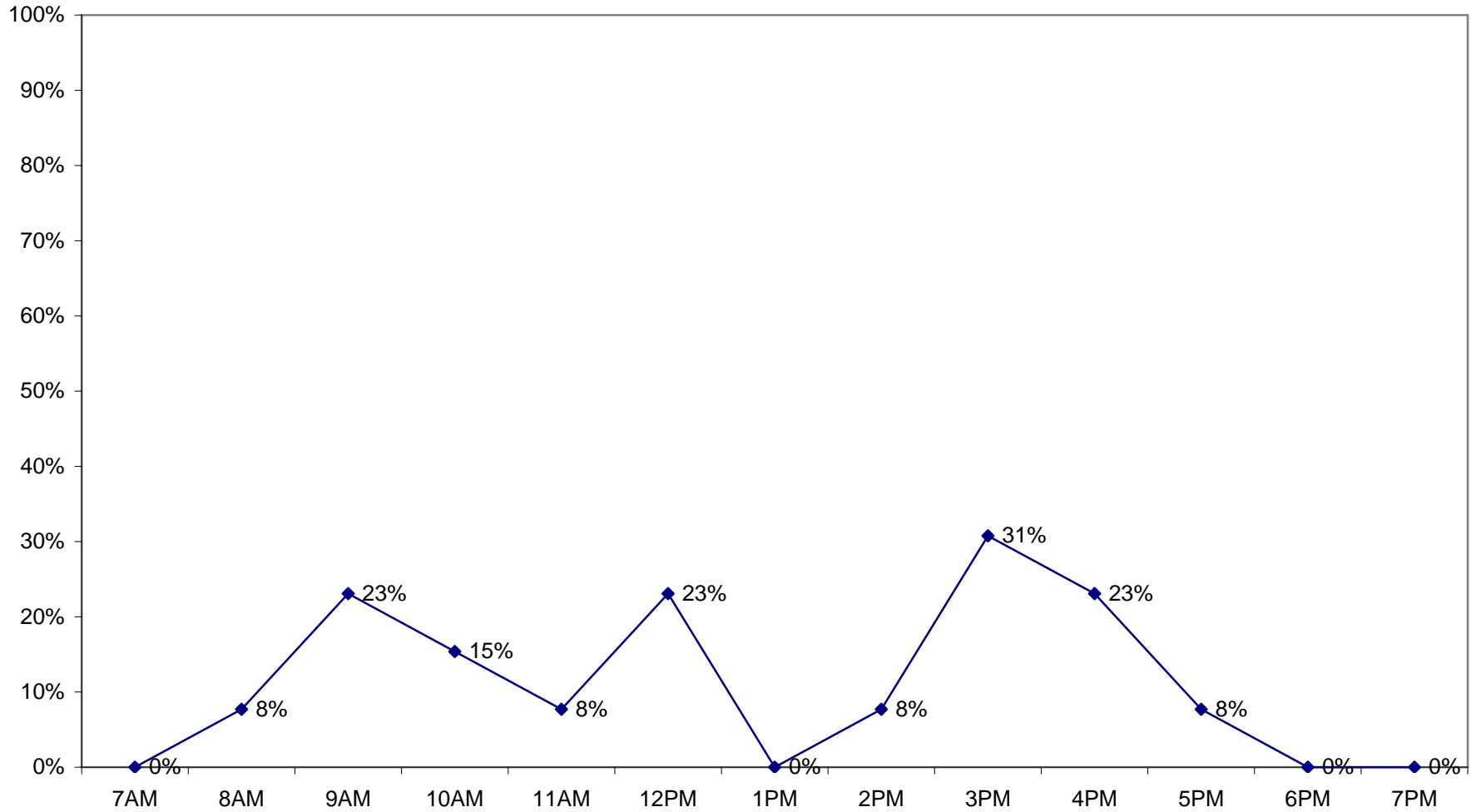


Thursday - 12/9/10

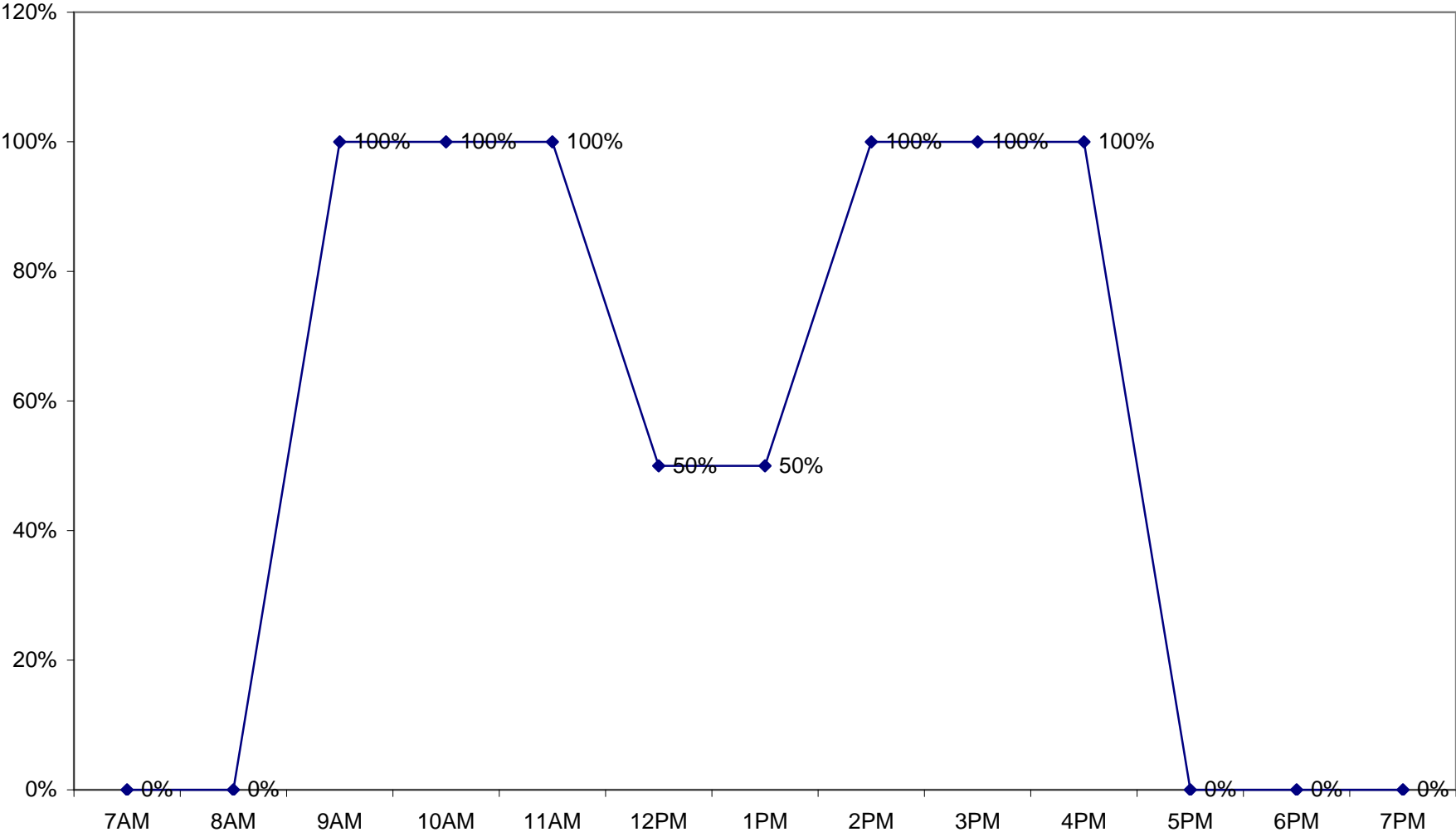
Zone 1 - On Adams Across from the Post Office
Avg. Occupancy 35% - Avg. Stay 3.09 hours
9 total spaces in zone



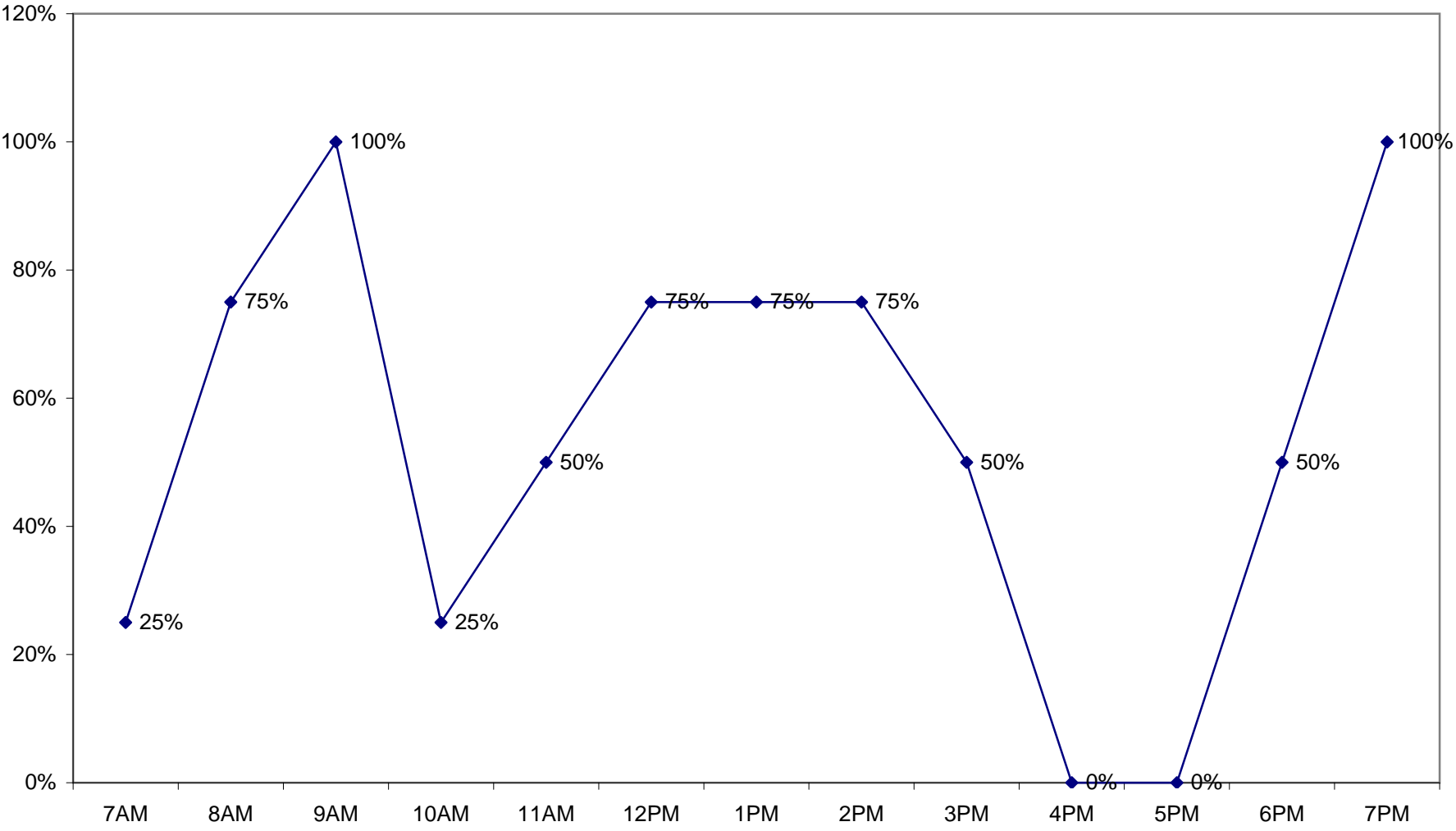
Zone 2 - South Side Adams Street West of Post Office
Avg. Occupancy - 11%
13 total spaces in zone
NB: Service Zone Parking



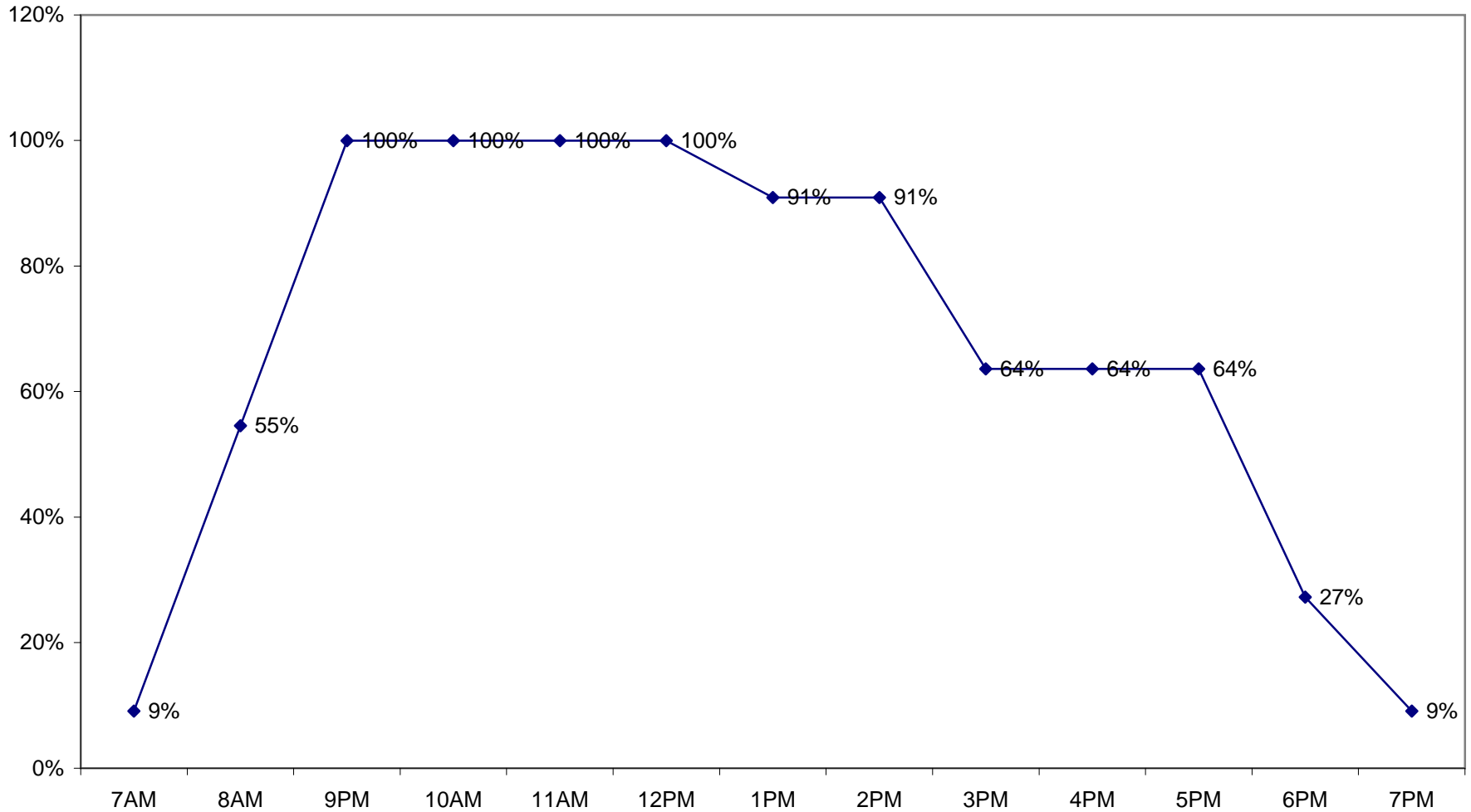
Zone 3 - Adams in front of the Post Office
Avg. Occupancy - 54%
2 total spaces in zone



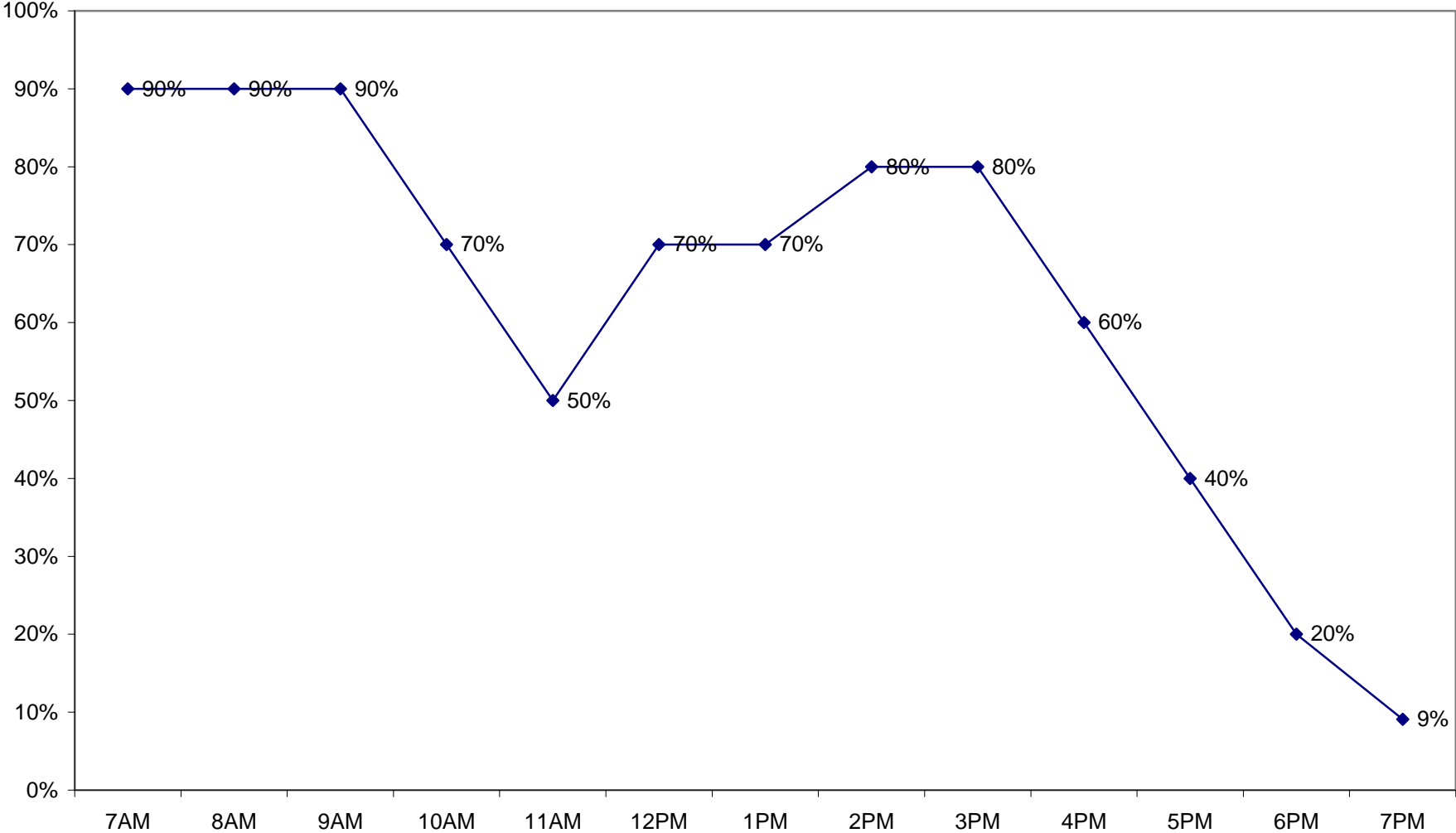
Zone 4 - North Side of Adams Over I-93
Avg. Occupancy 54% - Avg. Stay 1.67 hours
4 total spaces in zone



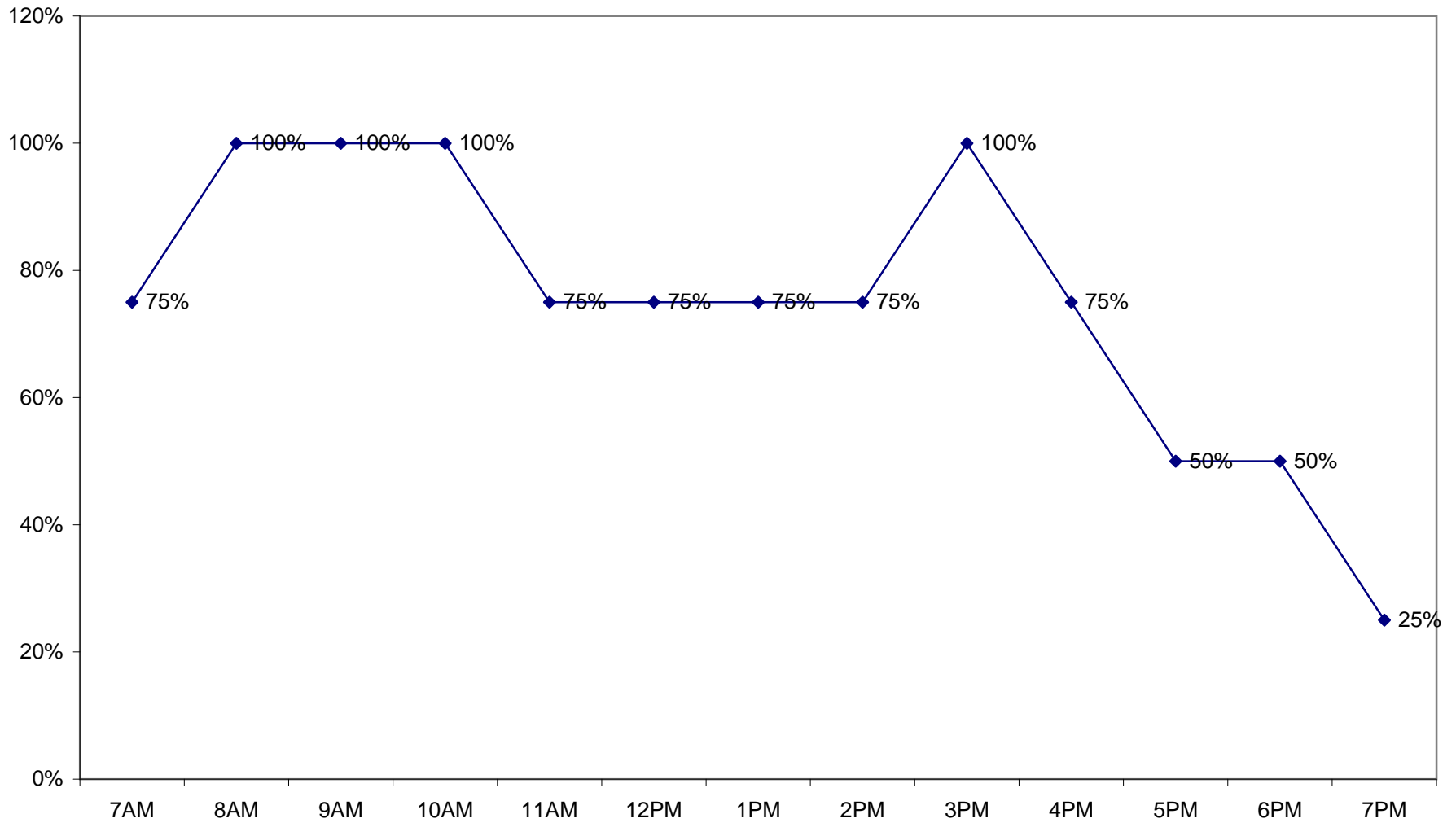
Zone 5 - On Bryant Across from the Post Office
Avg. Occupancy 67% - Avg. Stay 7.01 hours
11 total spaces in zone
NB: Service Zone Parking



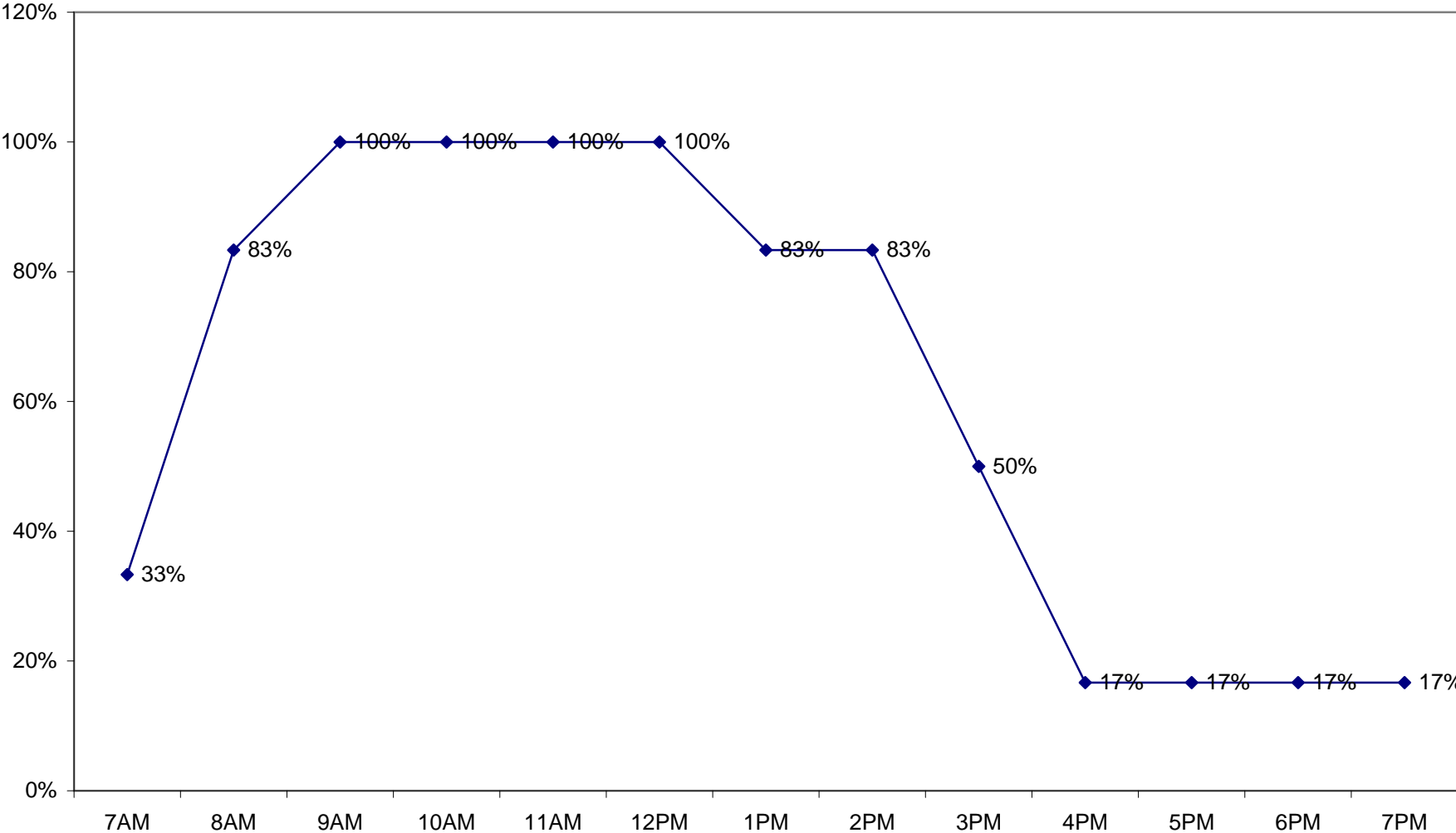
Zone 6 - On Edge Hill Next to the Post Office
Avg. Occupancy 63% - Avg. Stay 4.15 hours
10 total spaces in zone



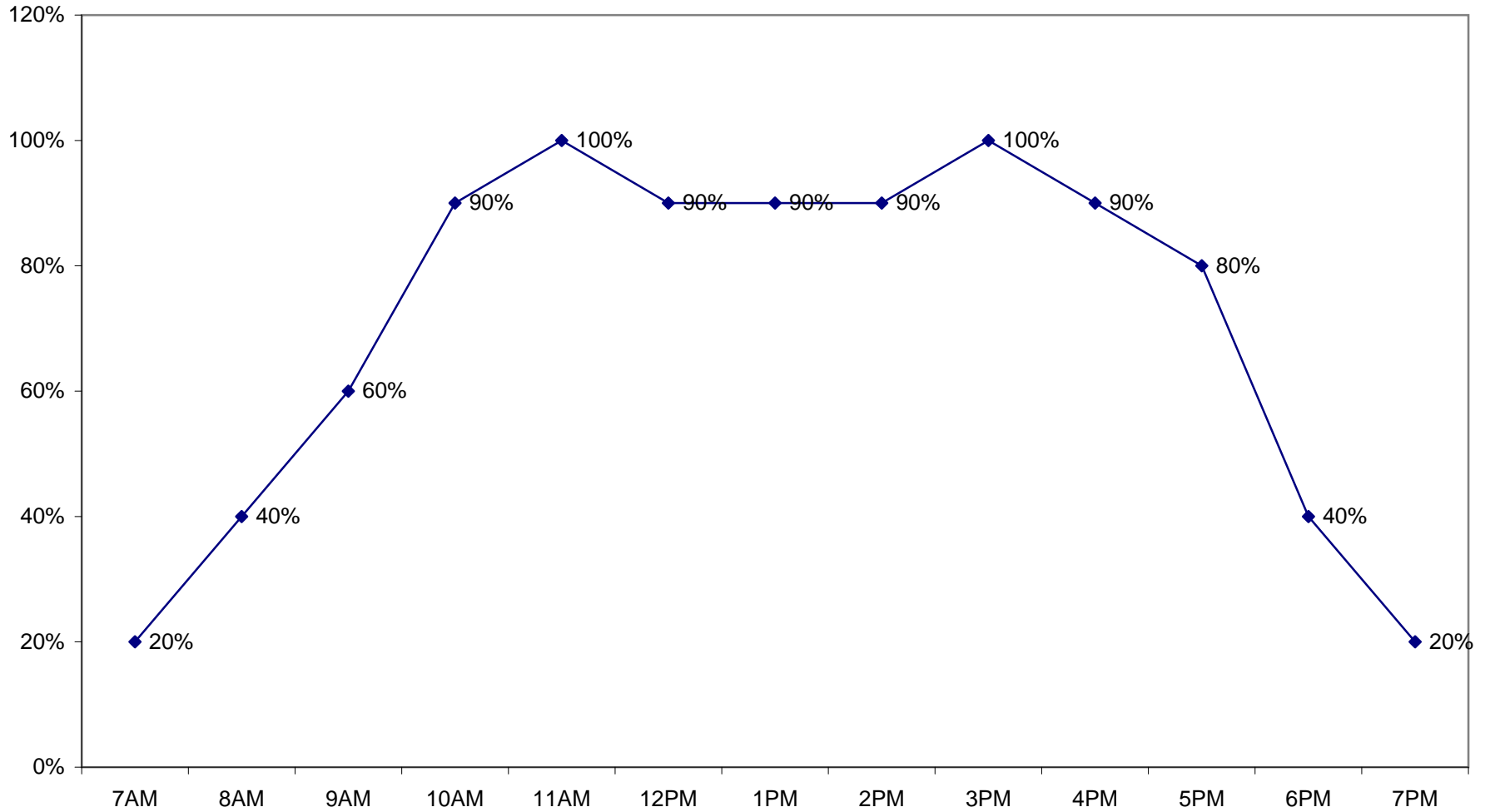
Zone 7 - On Edge Hill Across from the Post Office
Avg. Occupancy 56% - Avg. Stay 5.10 hours
4 total spaces in zone



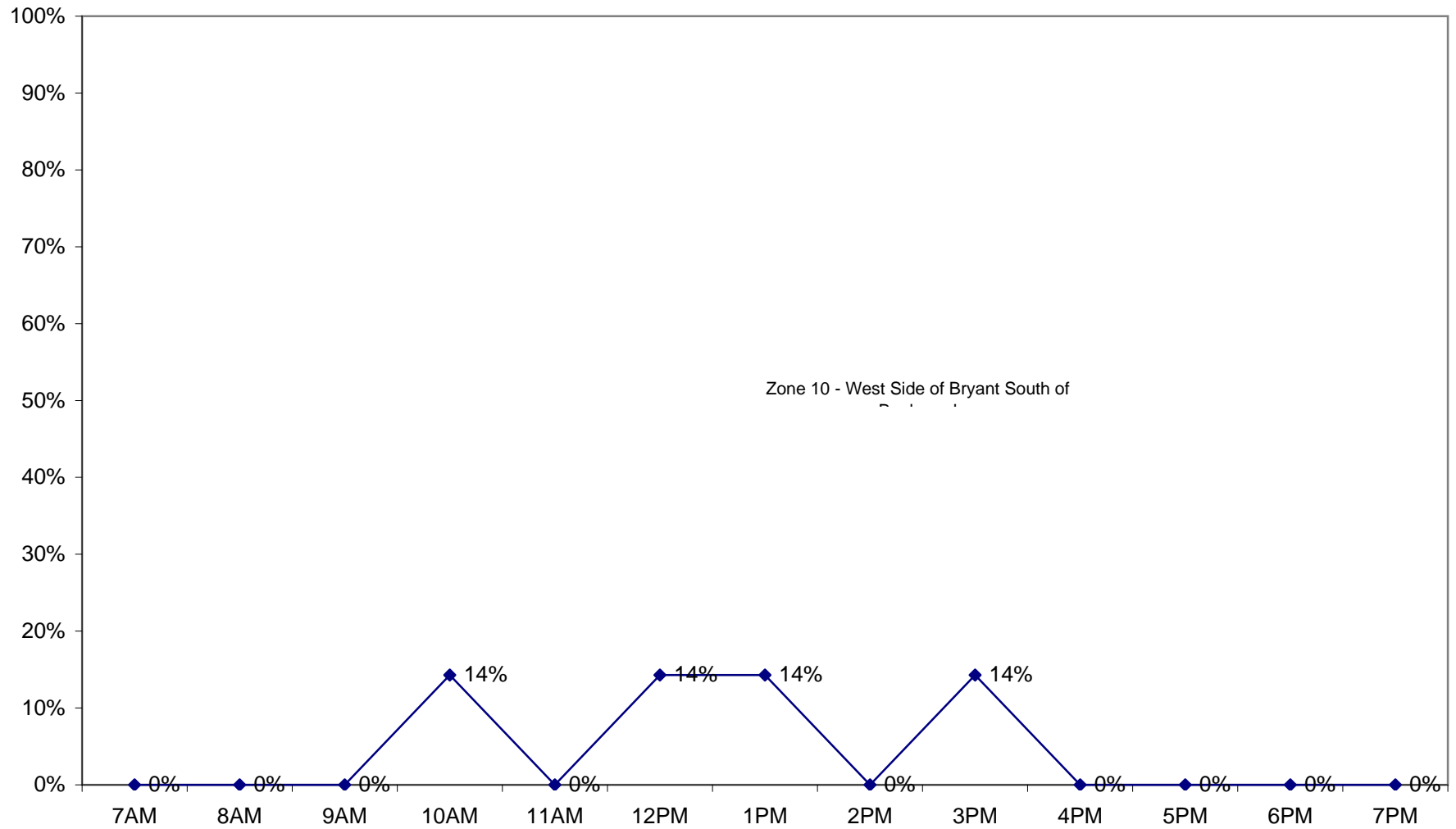
Zone 8 - South Side of Boulevard Between Grafton and Bryant
Avg. Occupancy - 62%
6 total spaces in zone



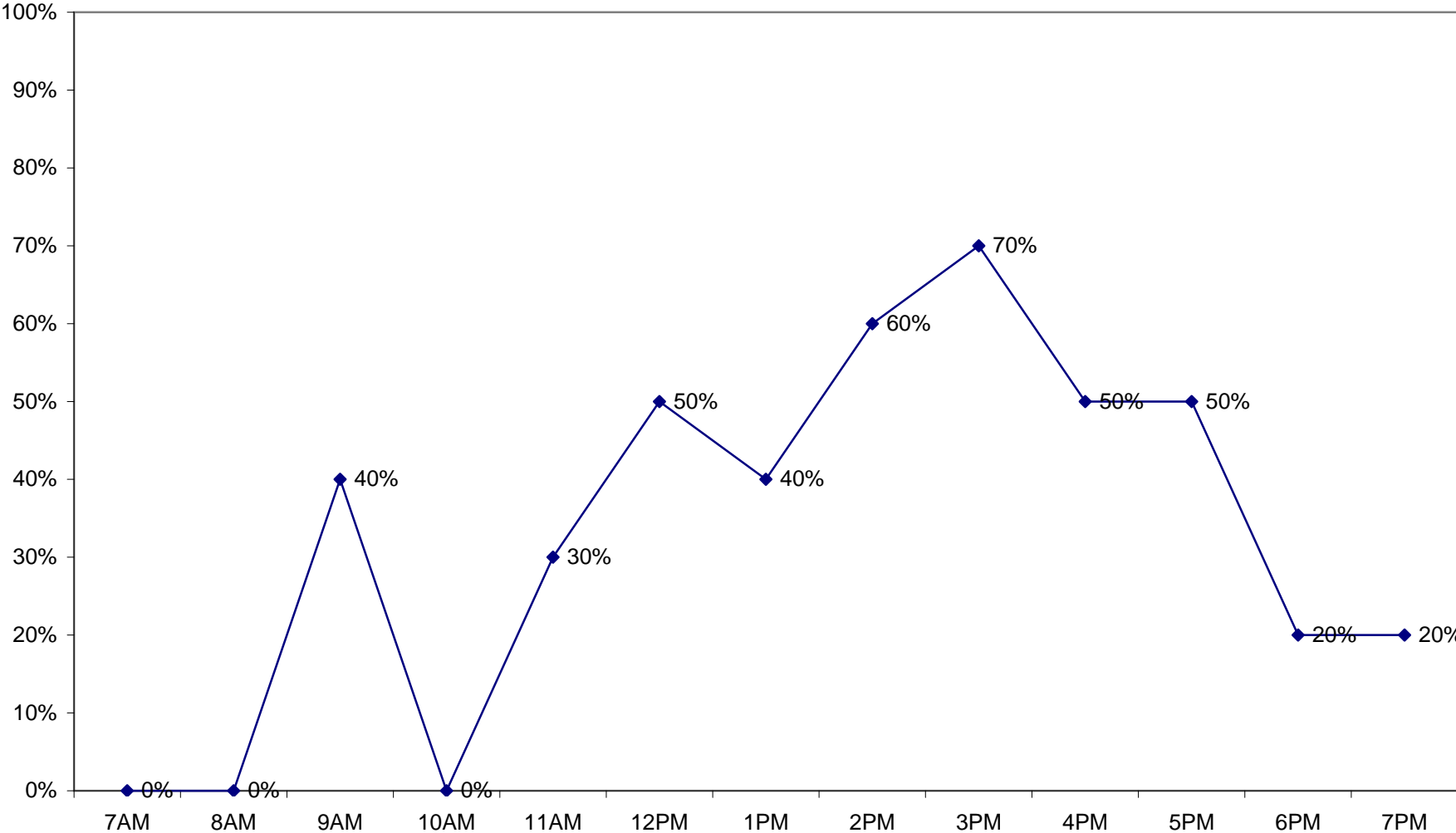
Zone 9 - West Side of Bryant South of Boulevard
Avg. Occupancy - 70% - Avg. Stay 7.50 hours
10 total spaces in zone
NB: Service Zone Parking except Sunday



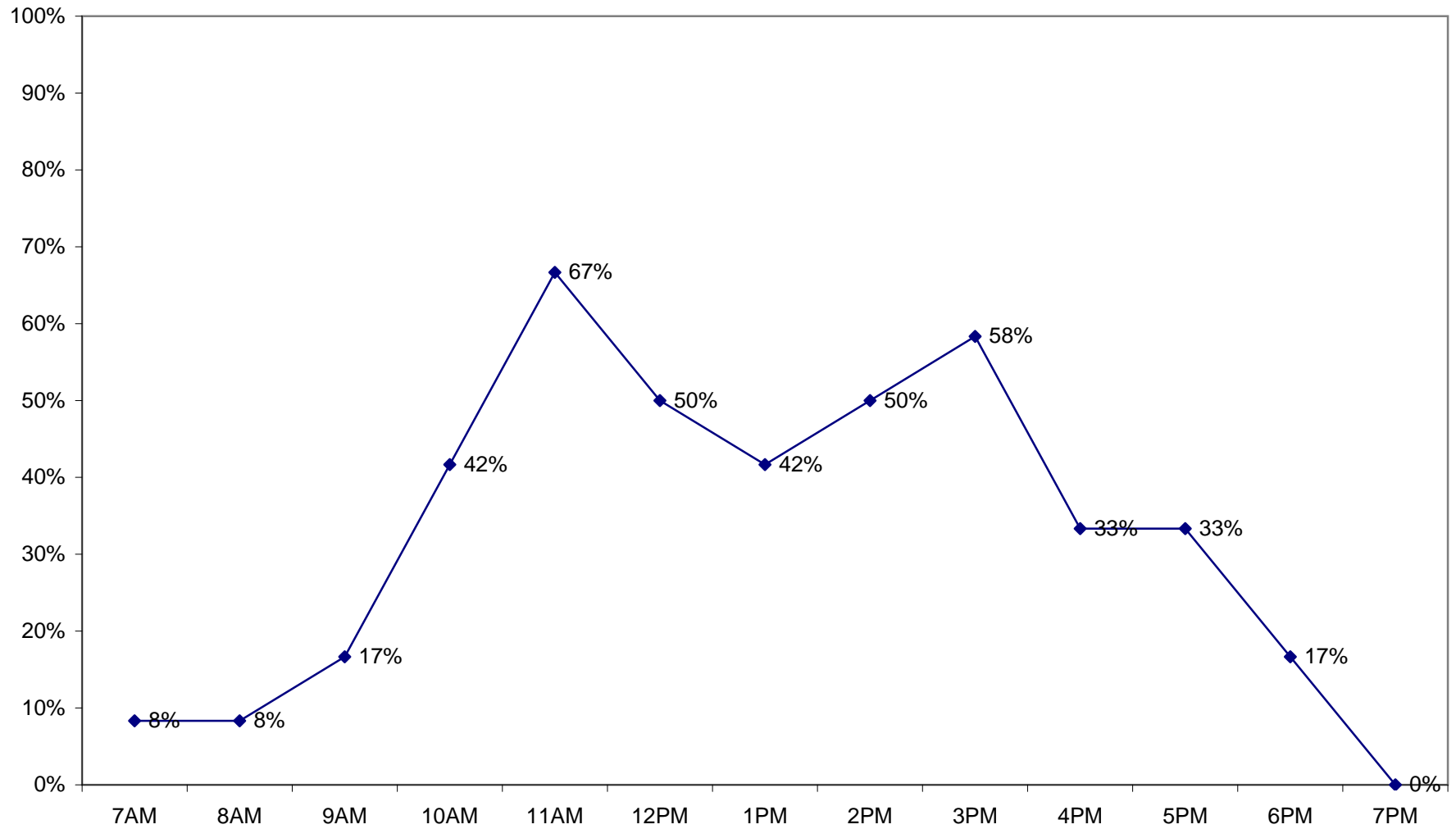
Zone 10 - West Side of Bryant South of Boulevard
Avg. Occupancy 4% - Avg. Stay 1 hour
7 total spaces in zone



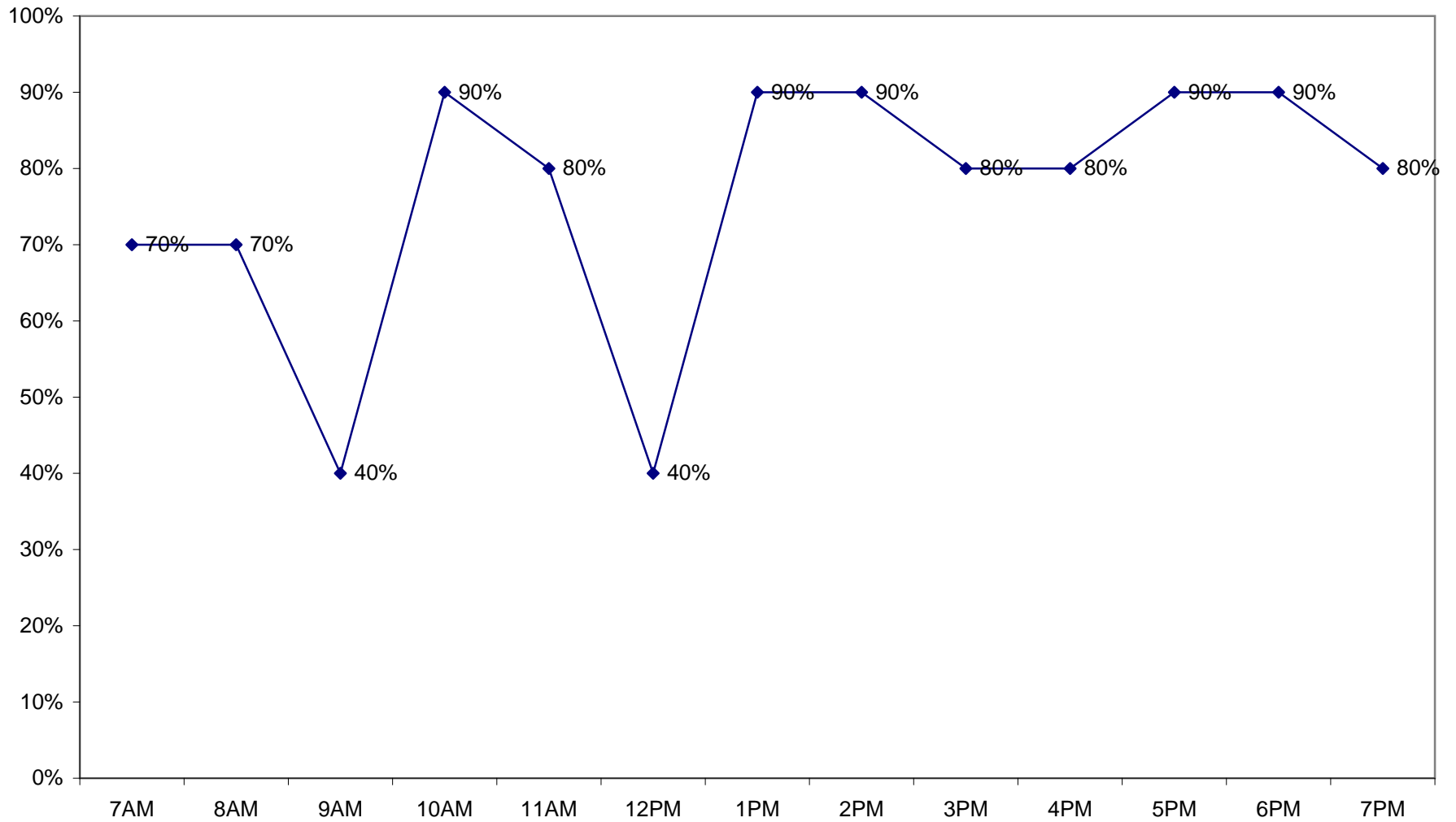
Zone 11 - East Side of Granite Between Mechanic and Adams
Avg. Occupancy 33% - Avg. Stay 2.17 hours
10 total spaces in zone



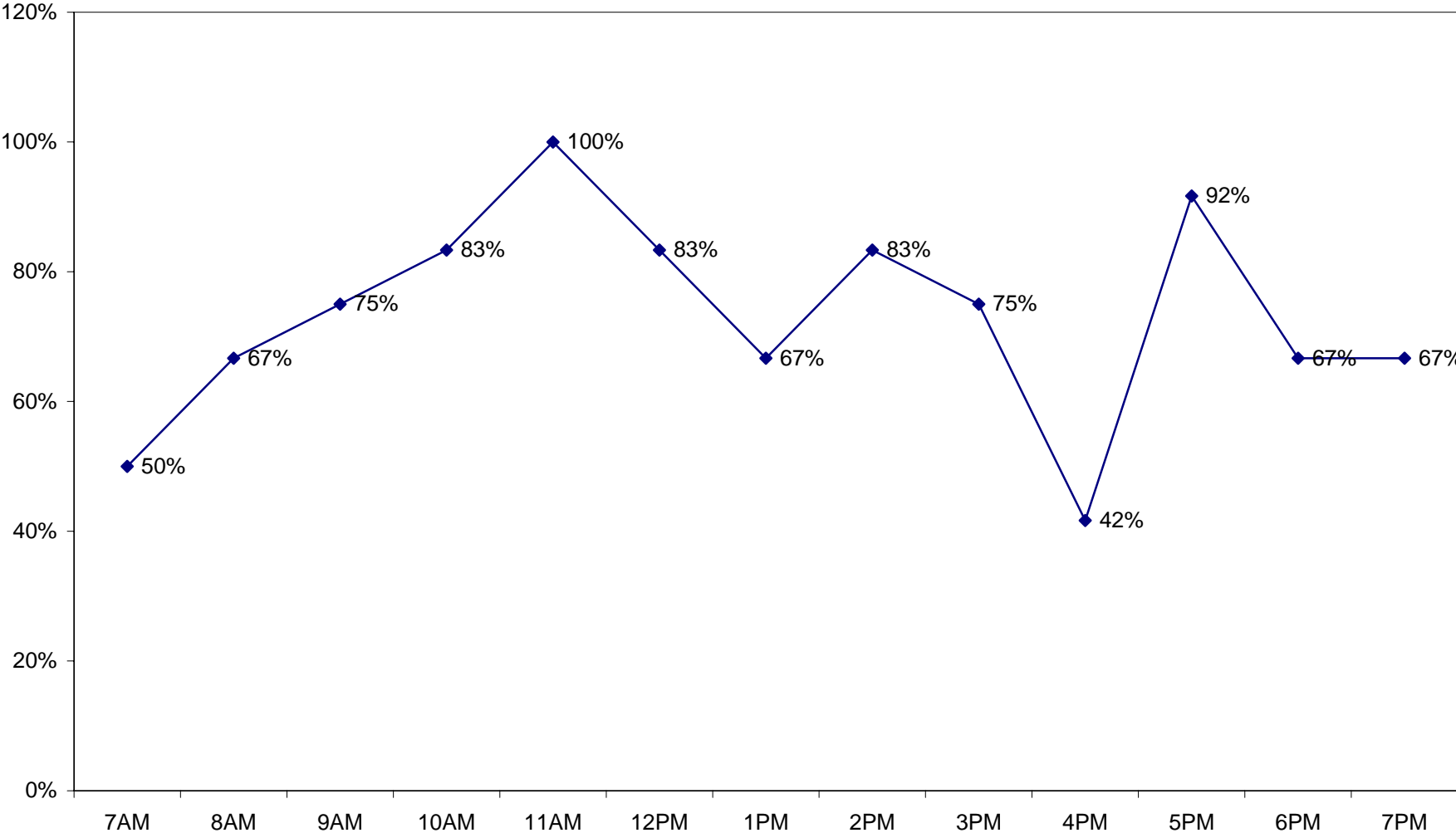
Zone 12 - East Side of Granite Between Pierce and Mechanic
Avg. Occupancy 33% - Avg. Stay 1.93 hours
12 Total Spaces in Zone



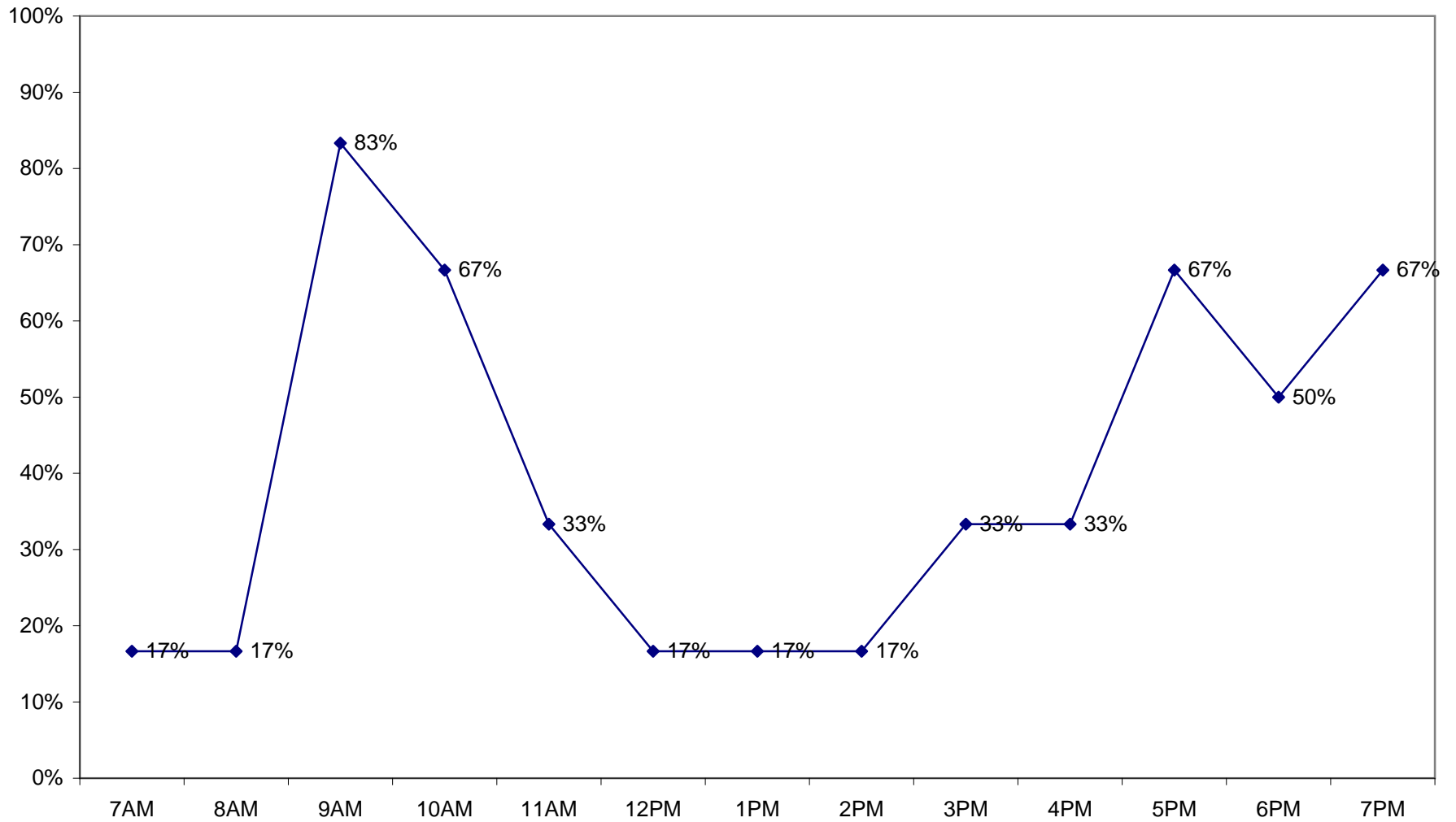
Zone 16 - South Side of Adams Granite to Mechanic
Avg. Occupancy 70% - Avg. Stay 1.27 hours
10 total spaces in zone



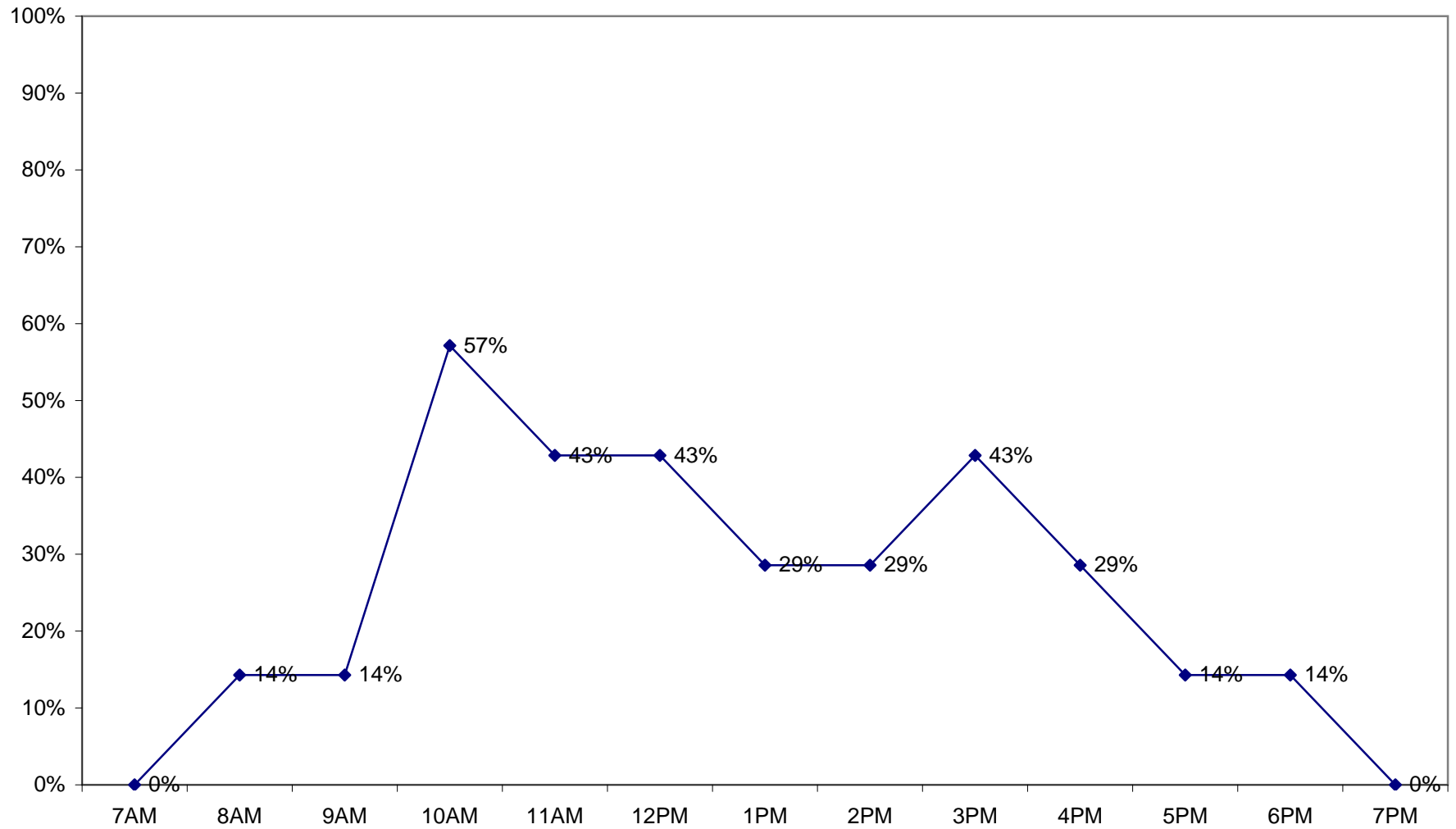
Zone 17 - East Side of Granite Adams to Basset
Avg. Occupancy 73% - Avg Stay 2.05 hours
12 total spaces in zone



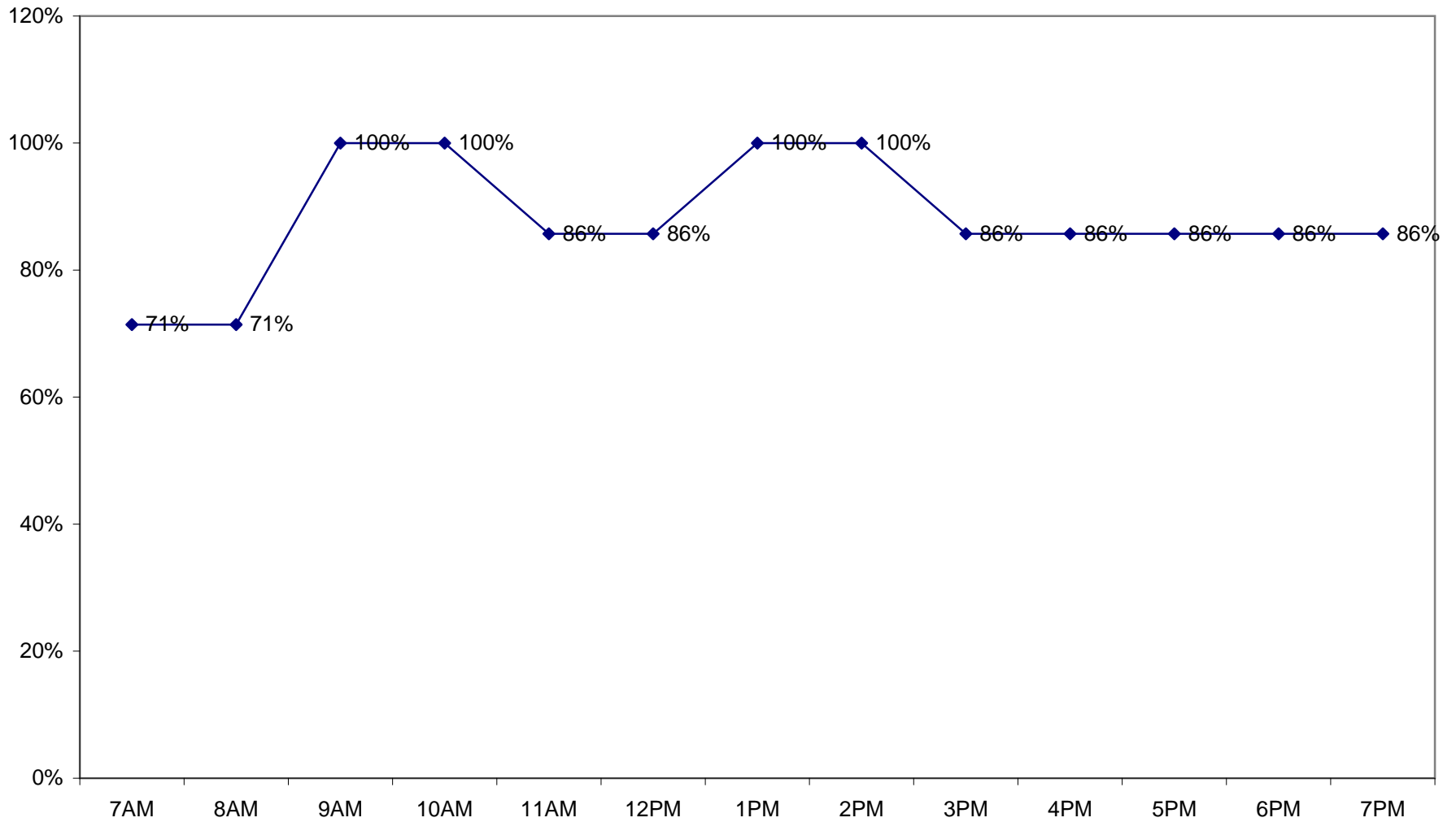
Zone 18 - East Side of Granite Bassett to Antwerp
Avg. Occupancy 40% - Avg. Stay 1.51 hours
6 total spaces in zone



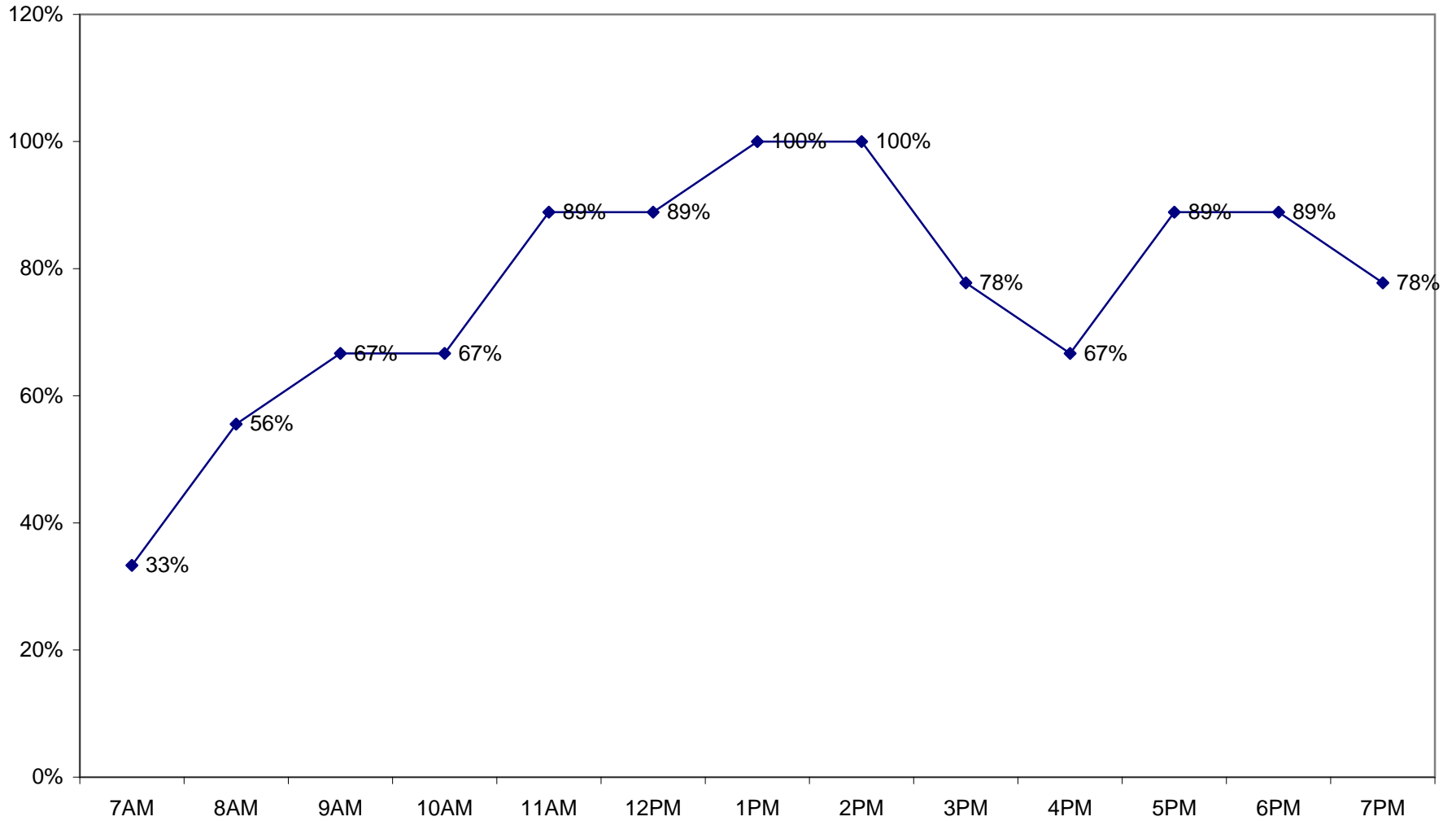
Zone 19 - East Side of Granite, Antwerp to Wood
Avg. Occupancy 25% - Avg. Occupancy 1.57 hours
7 total spaces in zone



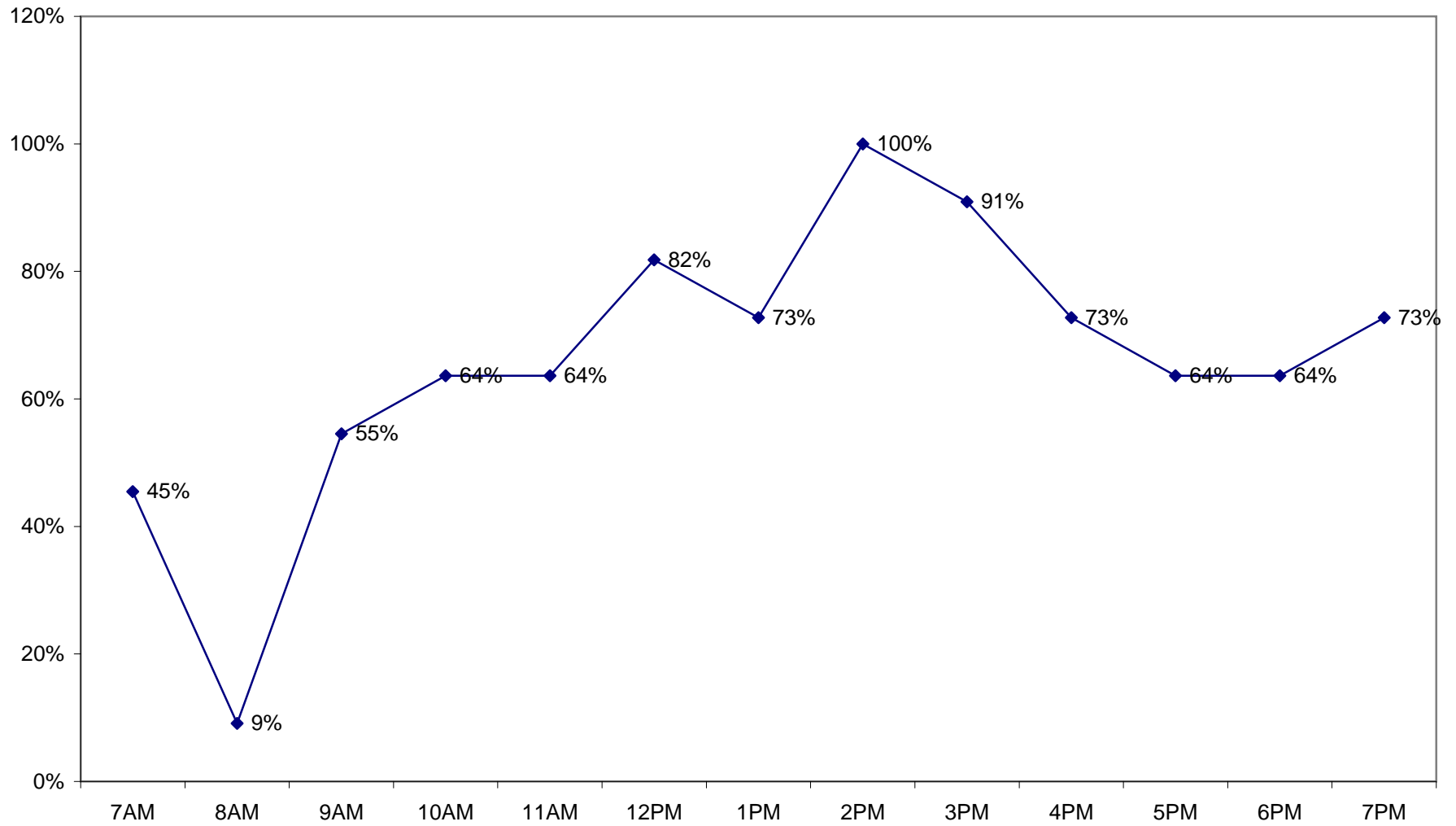
Zone 31 - East Side of Franklin, Adams to Bassett
Avg. Occupancy 88% - Avg. Stay 7.23 hours
7 total spaces in zone



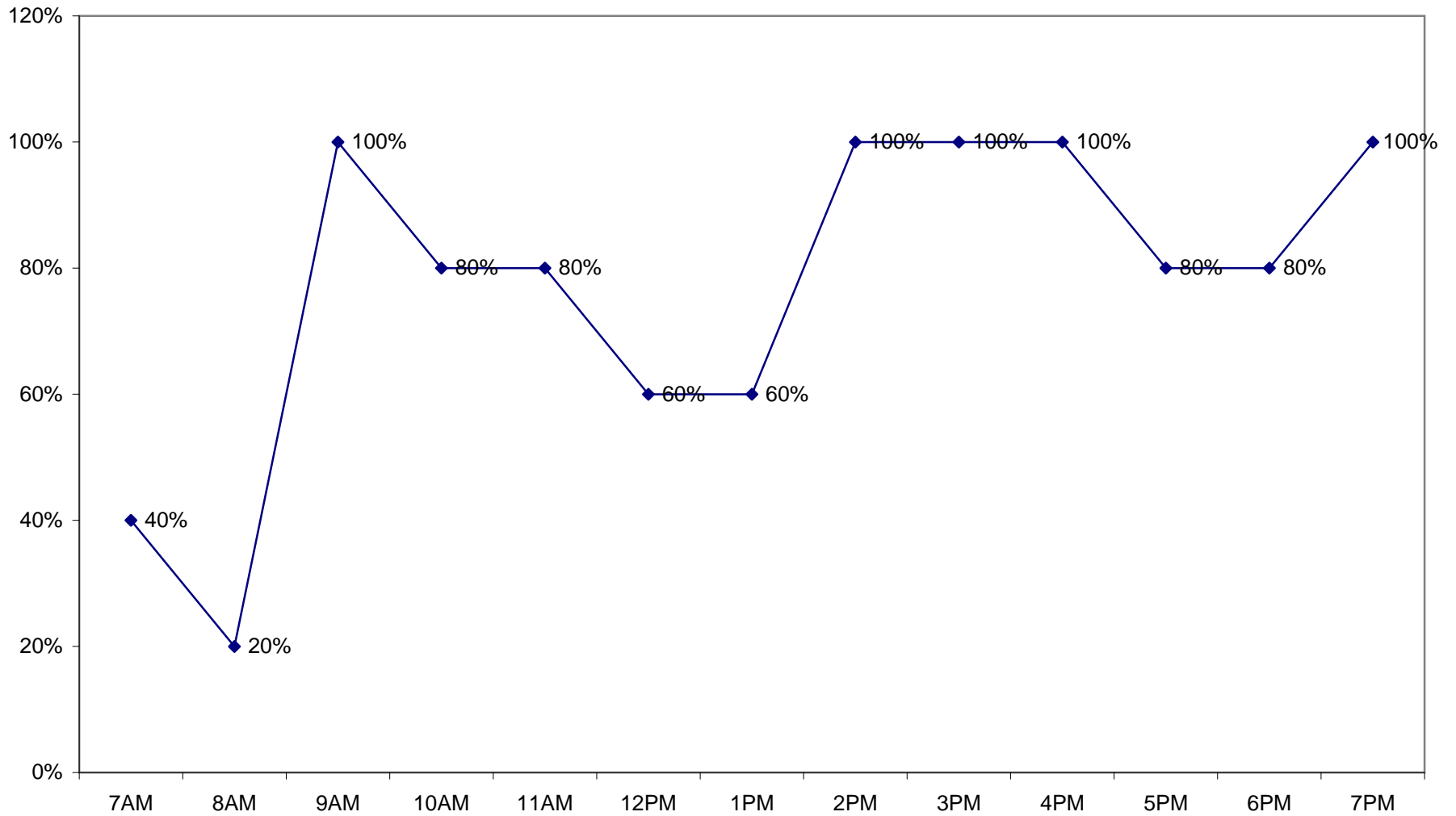
Zone 32 - North Side of Adams Church to Franklin
Avg. Occupancy 77% - Avg. Stay 2.58 hours
9 total spaces in zone



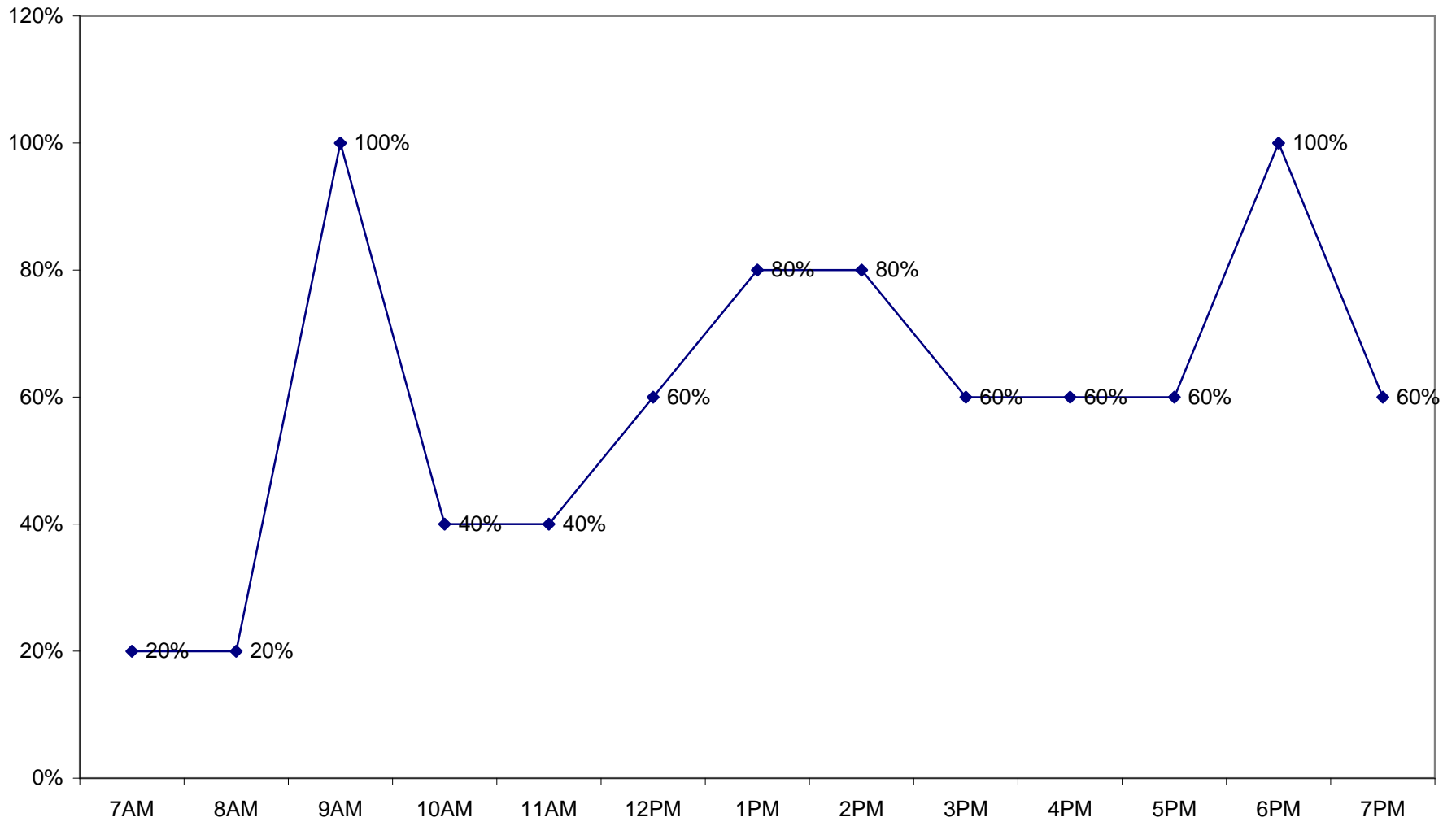
Zone 33 - North Side Adams Street Franklin to Adams Court
Avg. Occupancy 66% - Avg. Stay 2.01 hours
11 total spaces in zone



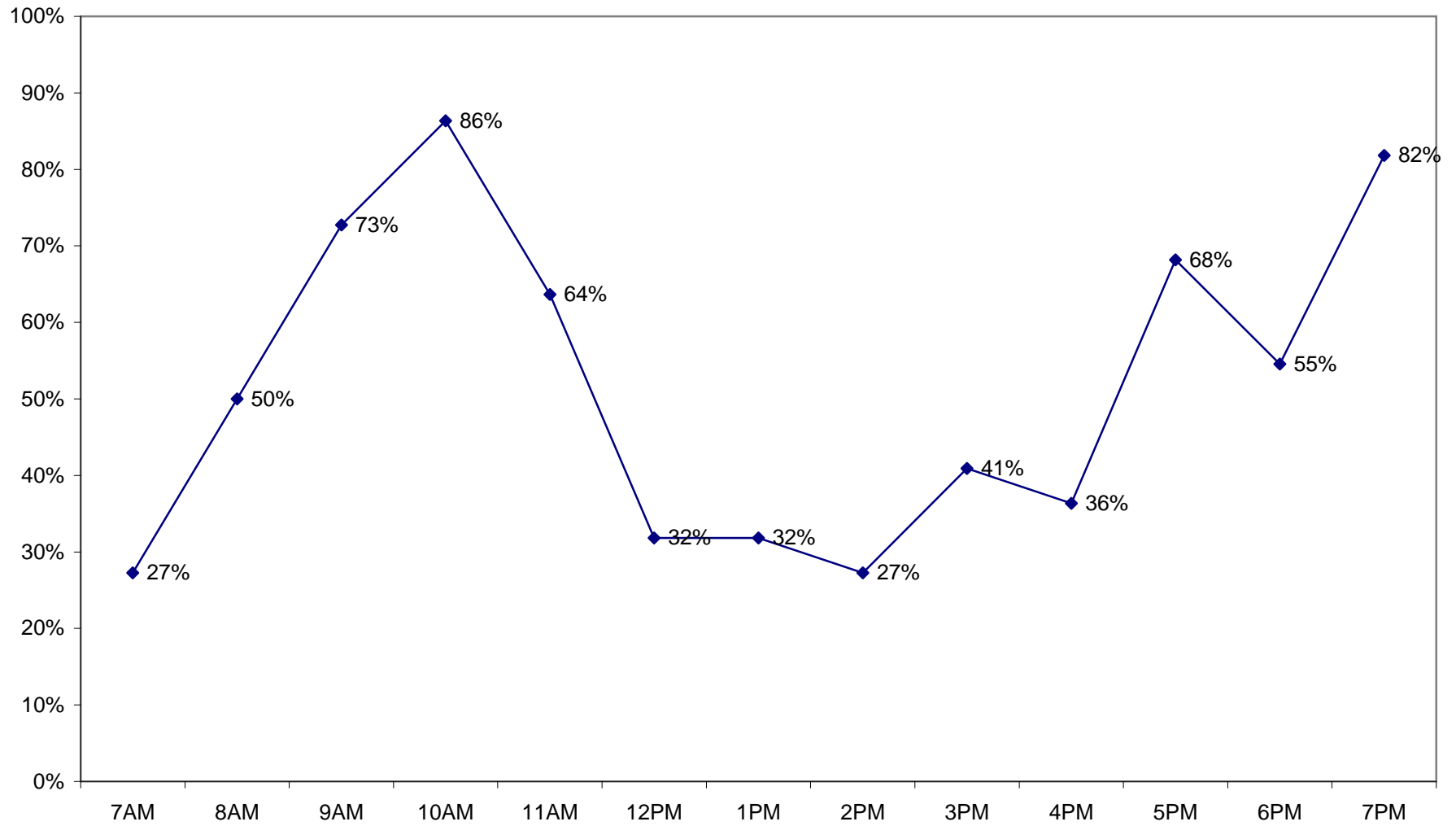
Zone 34 - South Side Bassett Granite to Adams Court
Avg. Occupancy 77% - Avg. Stay 3.01 hours
5 total spaces in zone



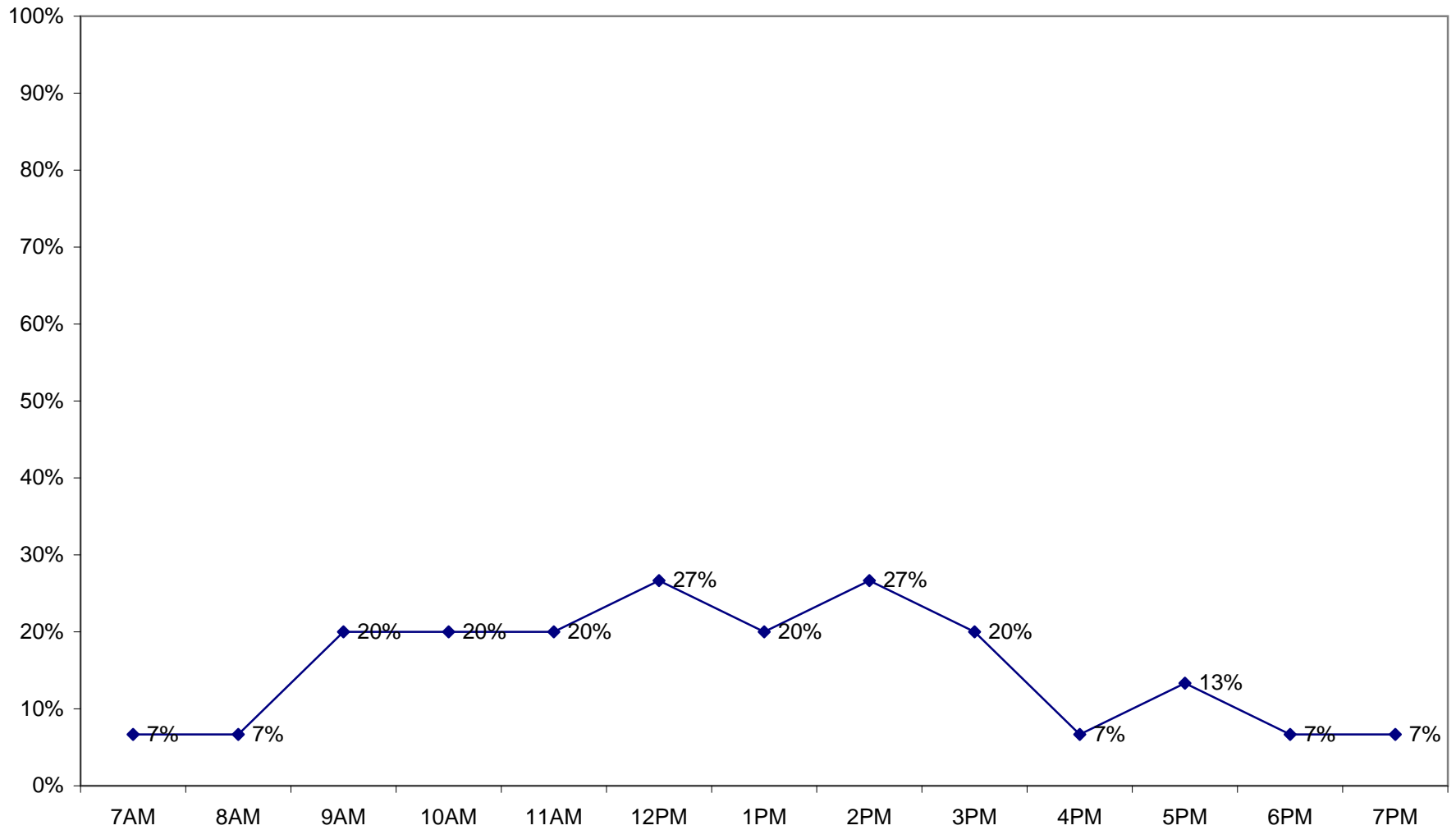
Zone 35 - South Side Bassett Adams Court to Franklin
Avg. Occupancy 60% - Avg. Stay 2.51 hours
5 total spaces in zone



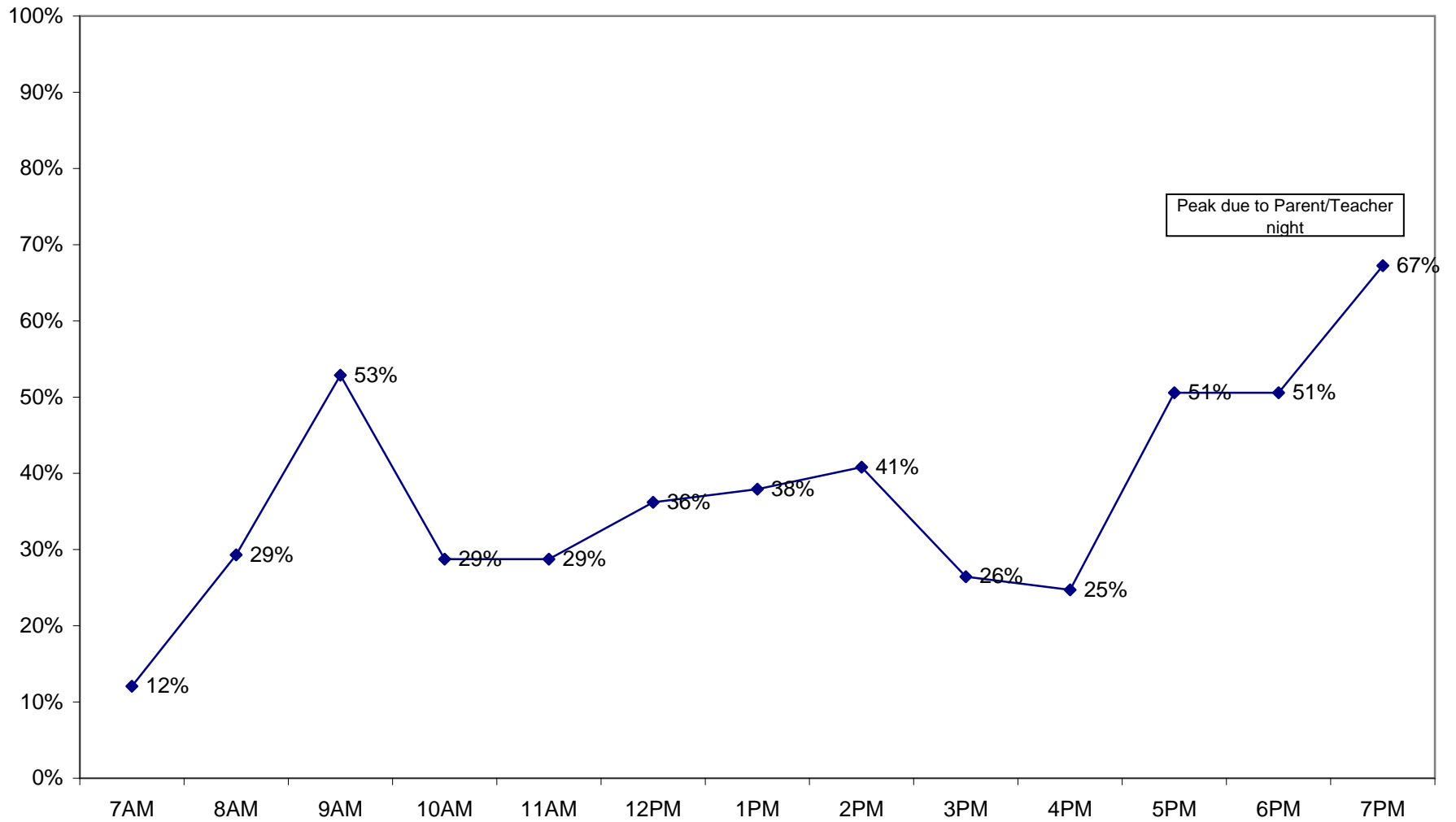
Zone 36 - West Side Granite Angle-in Parking
Avg. Occupancy 52% - Avg. Stay 1.95 hours
22 total spaces in zone



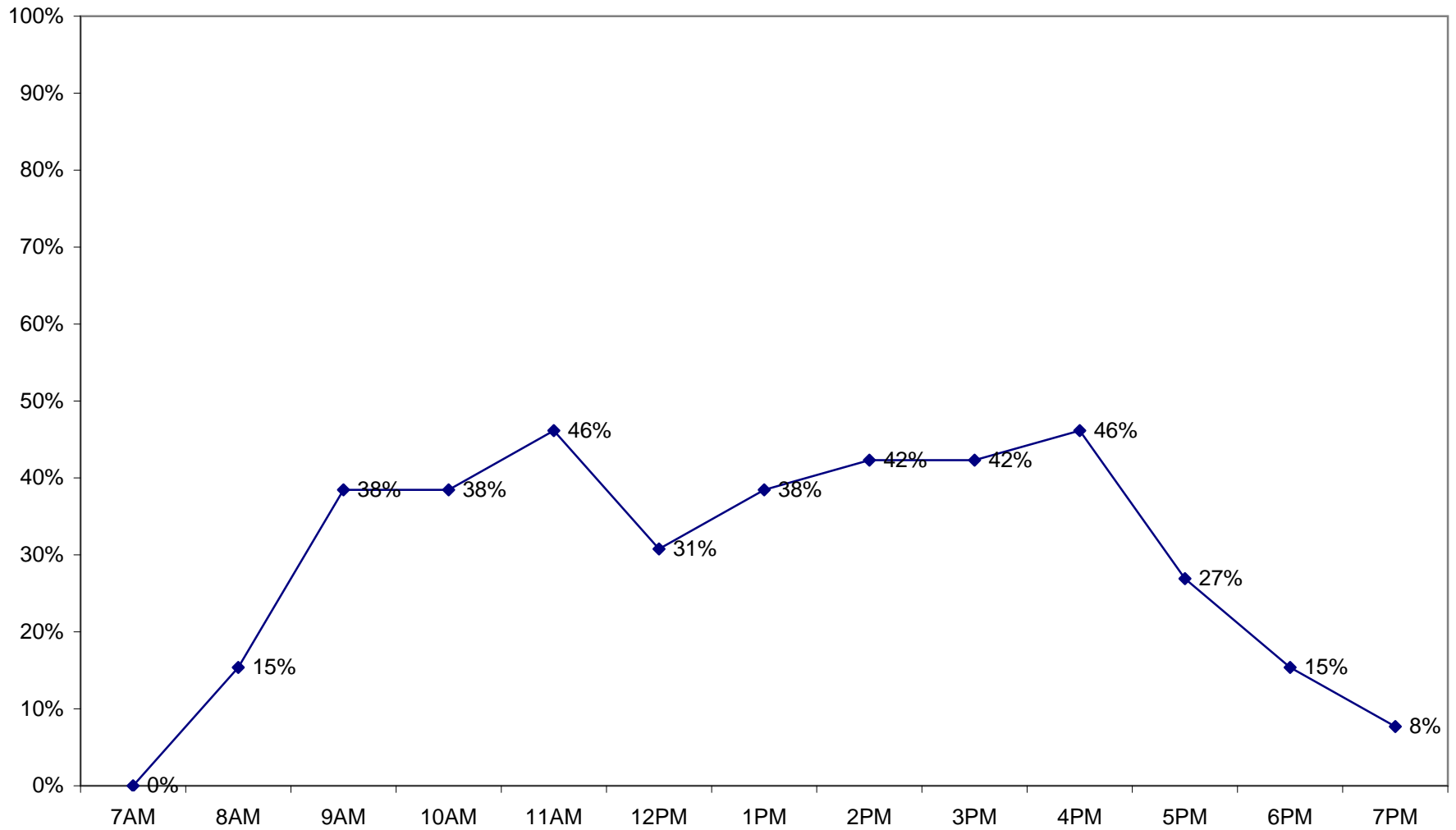
Zone 37 - North Side of Adams Granite Place to Church
Avg. Occupancy - 15%
15 total spaces in zone



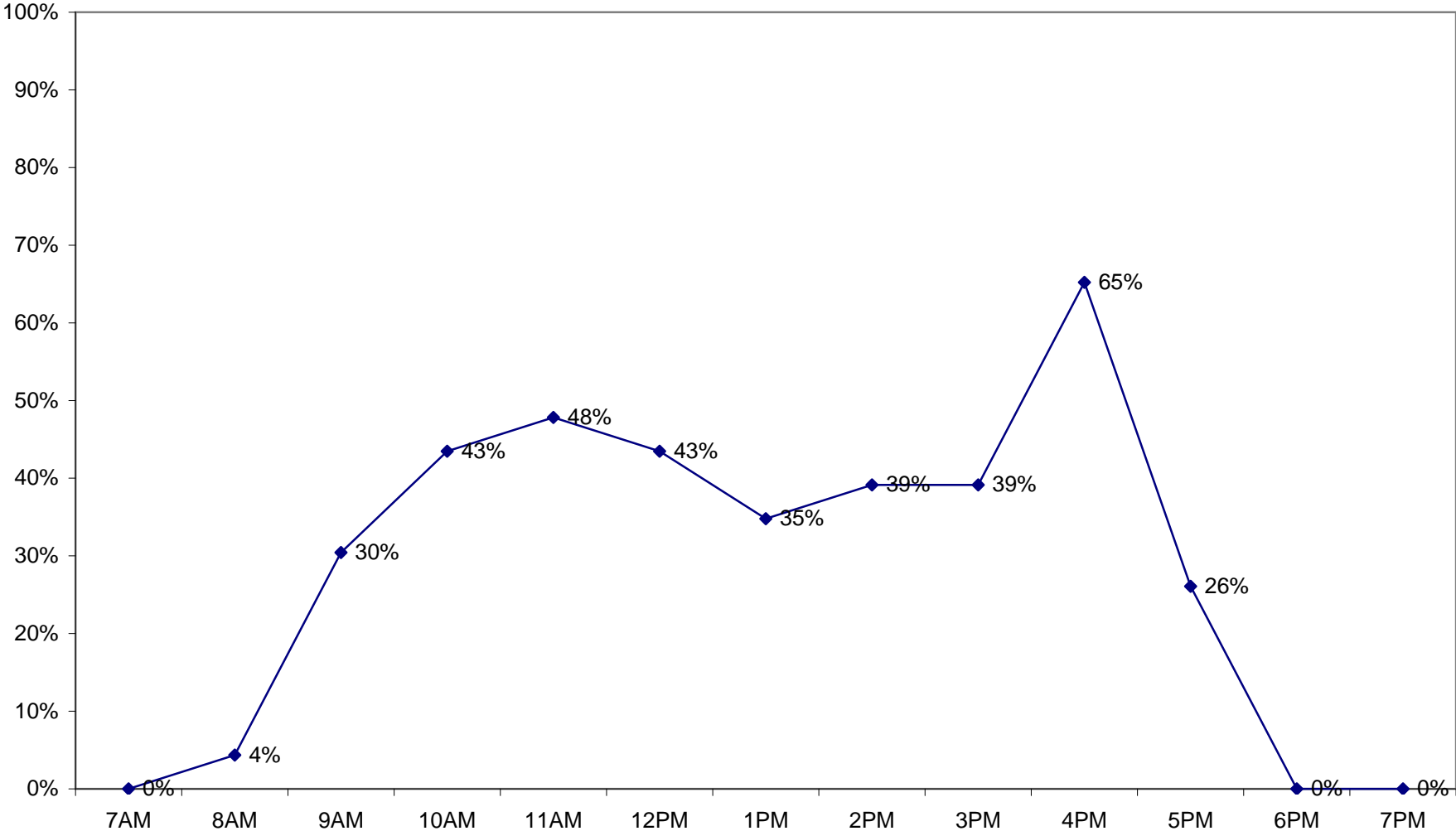
Saint Agatha's Lot
Avg. Occupancy - 37%
174 total spaces in zone



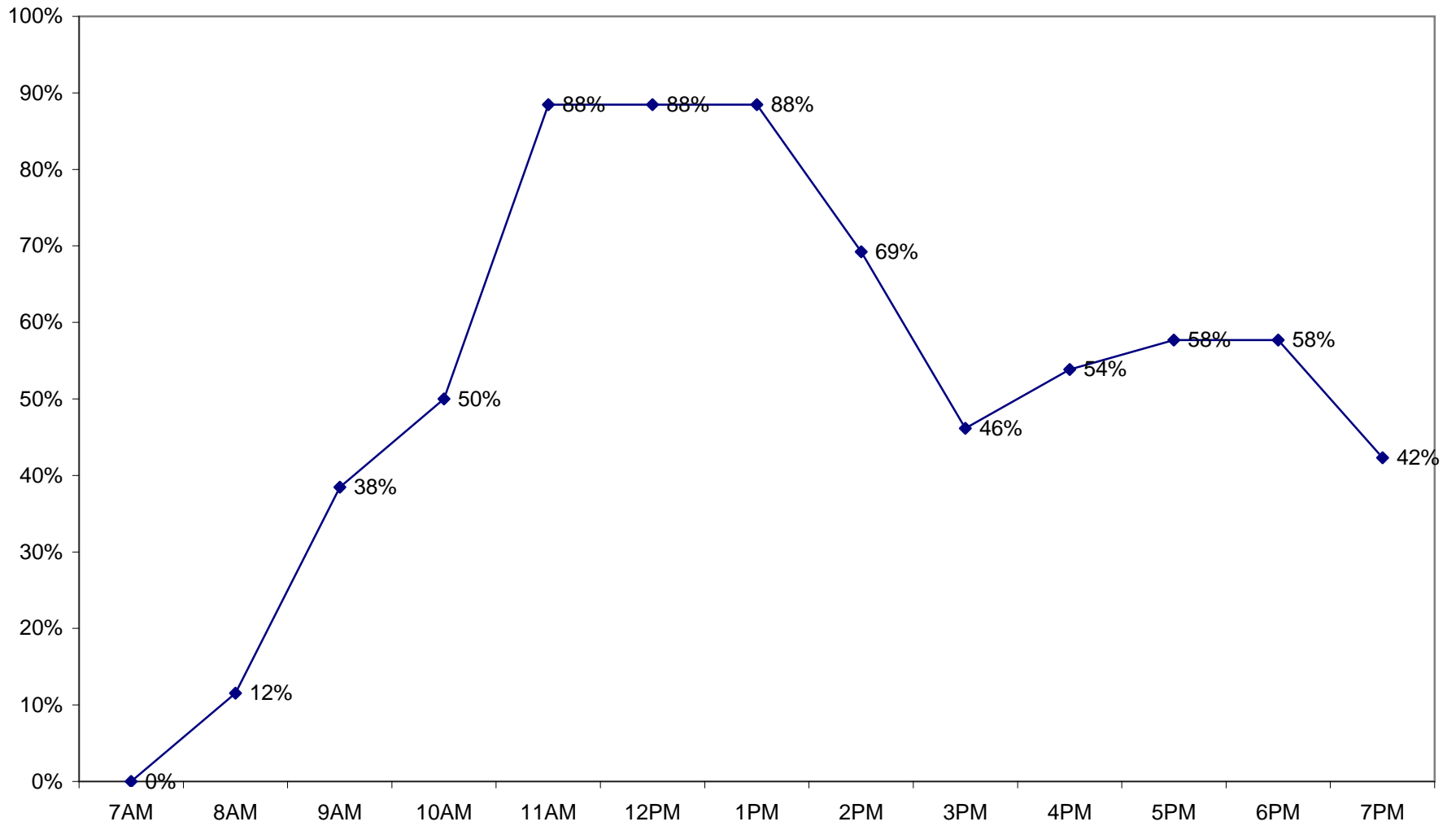
Dolan Funeral Home Lot
Avg. Occupancy - 30%
26 total spaces in zone



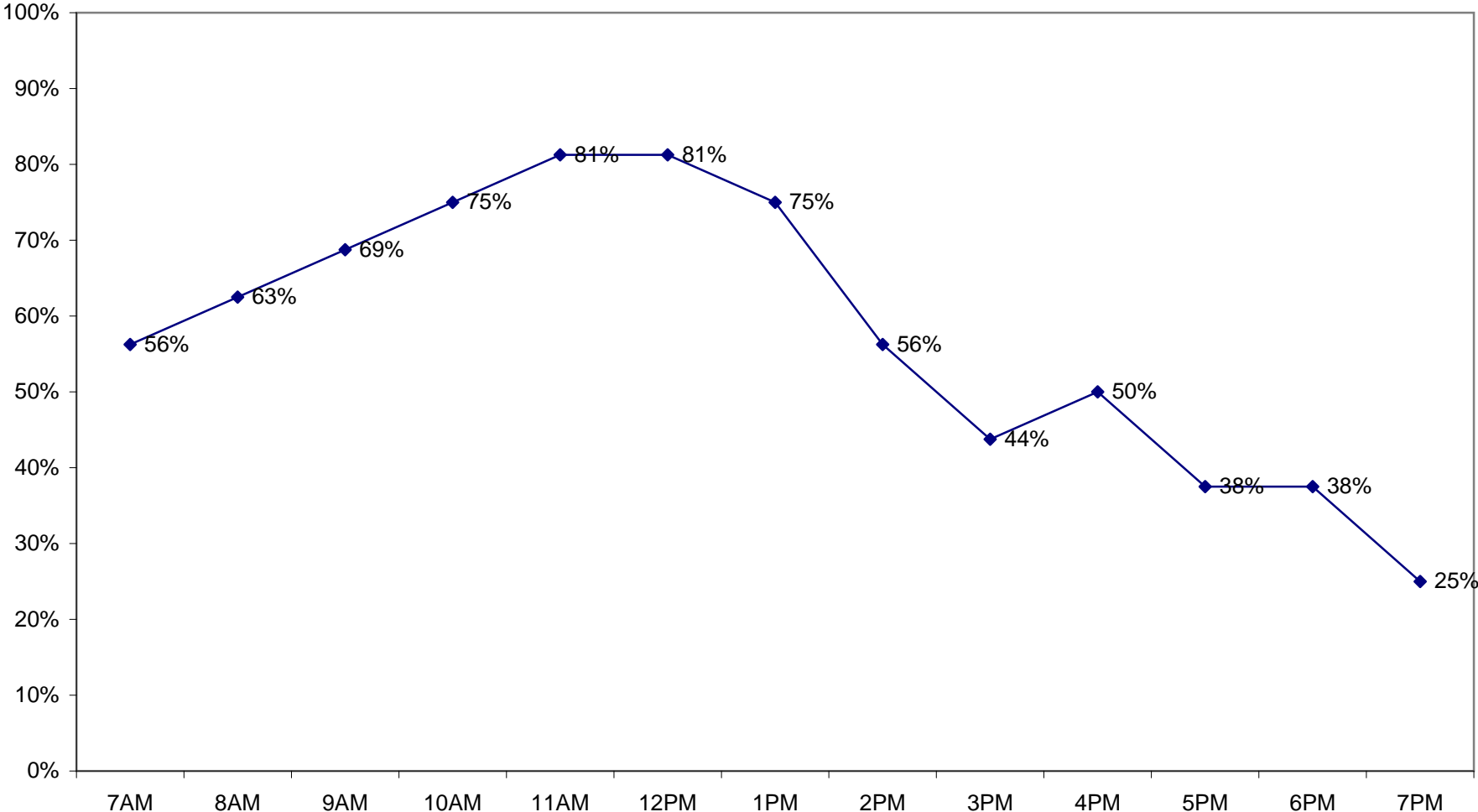
Citizens Bank Lot
Avg. Occupancy - 29%
23 total spaces in zone



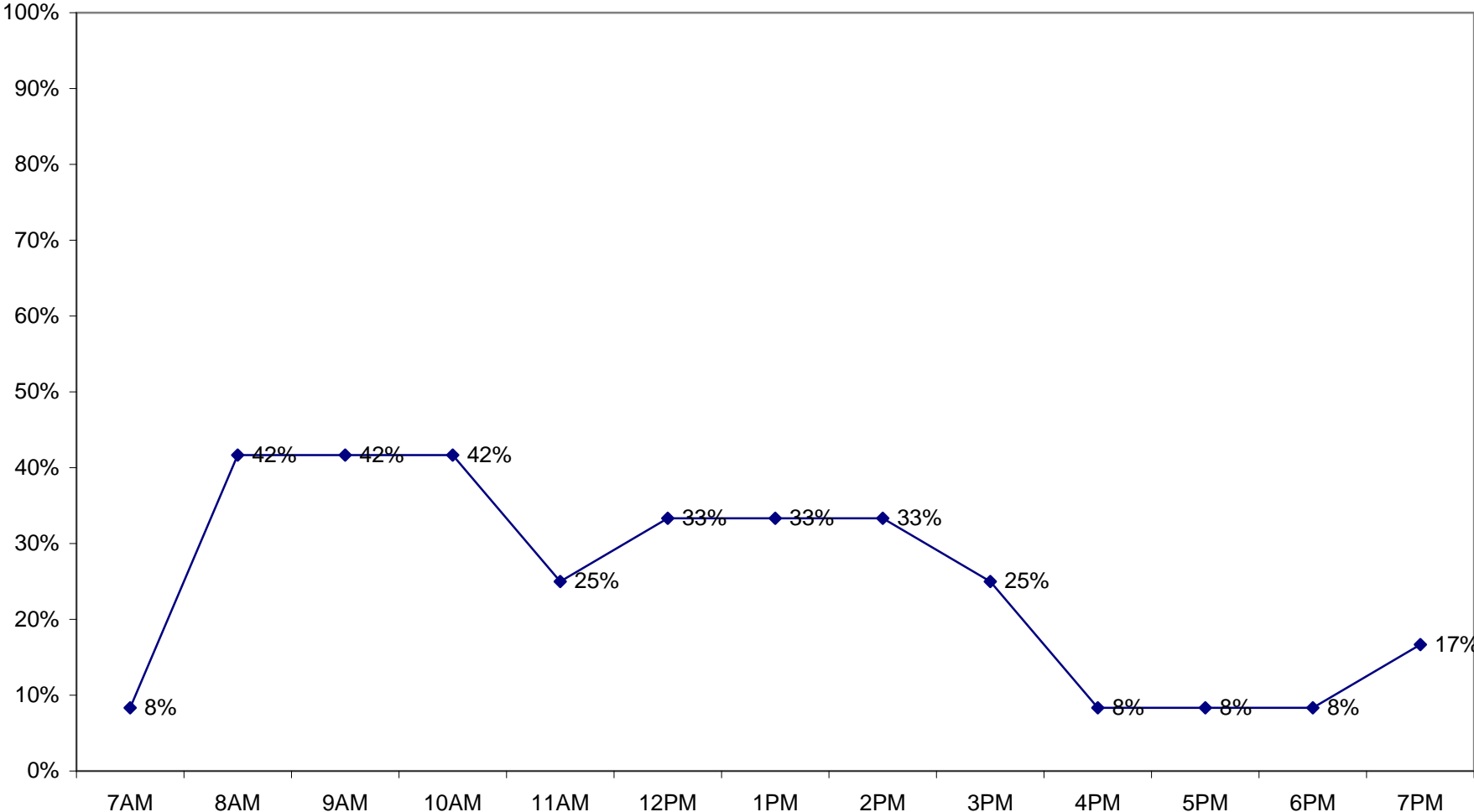
Sovereign Bank Lot
Avg. Occupancy - 53%
26 total spaces in zone



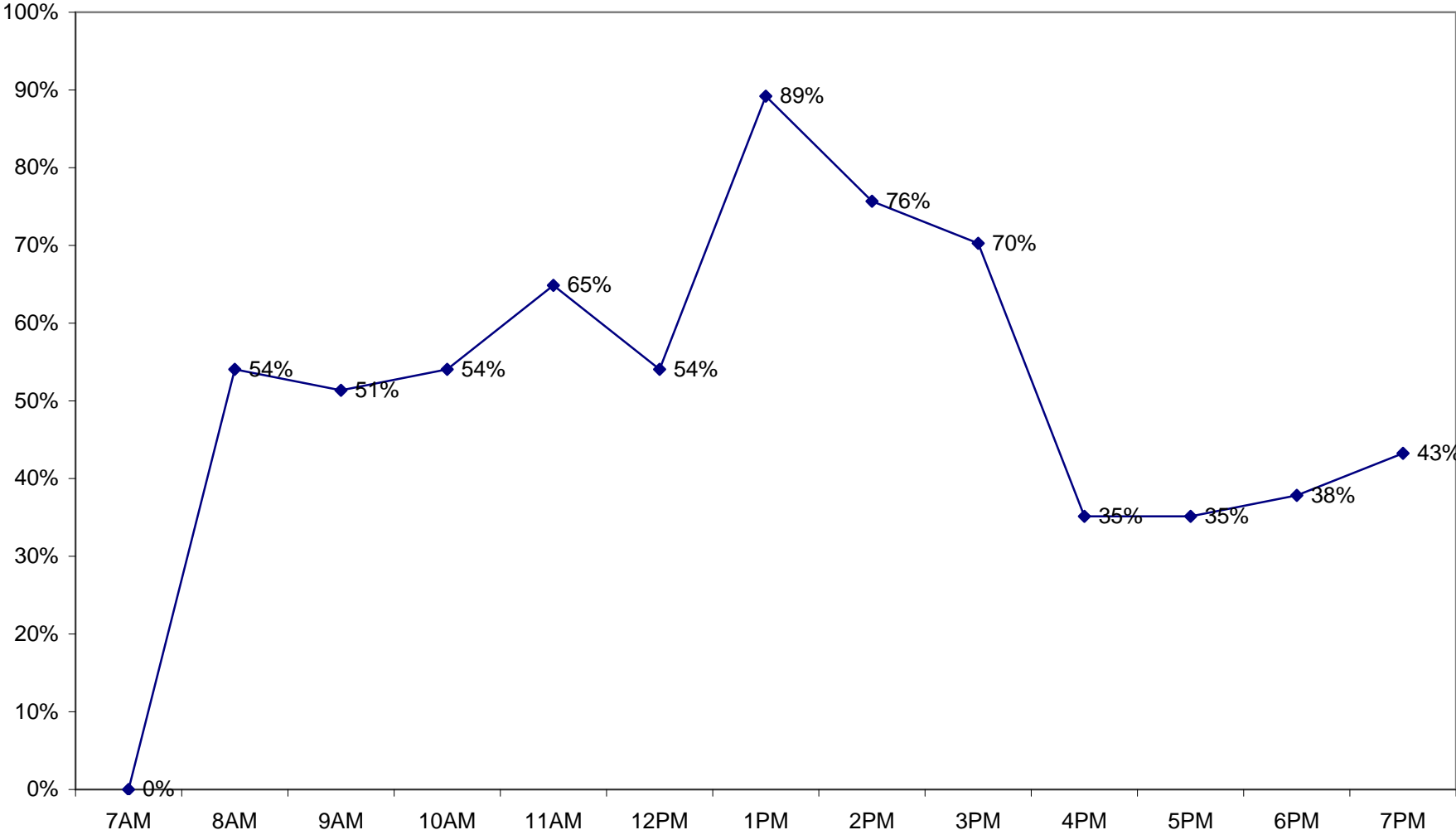
Municipal Lot North of Antwerp Street
Avg. Occupancy - 58%
16 total spaces in zone
NB: Service Zone Parking



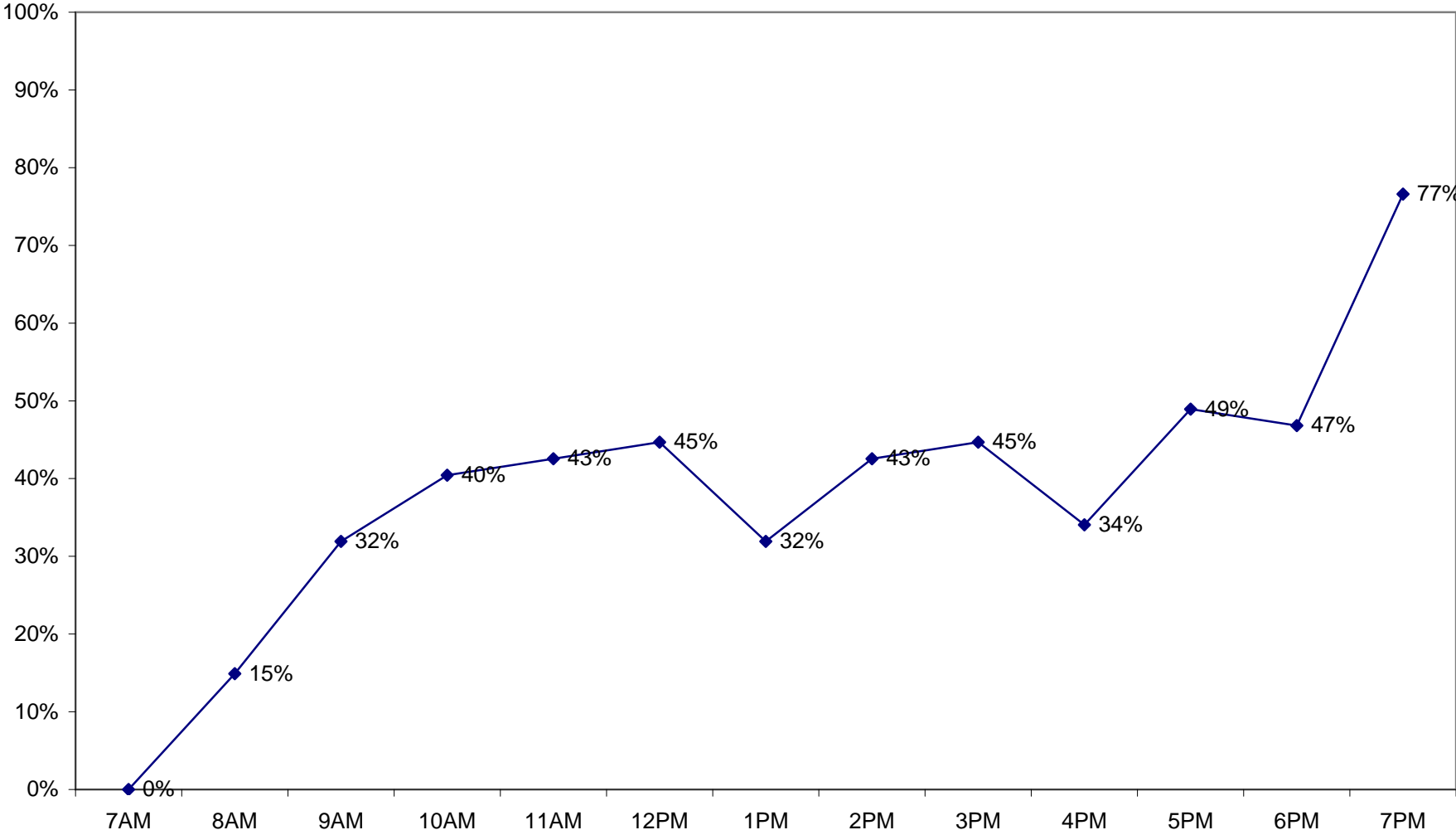
Municipal Lot North of Antwerp Street
Avg. Occupancy - 58%
12 total spaces in zone



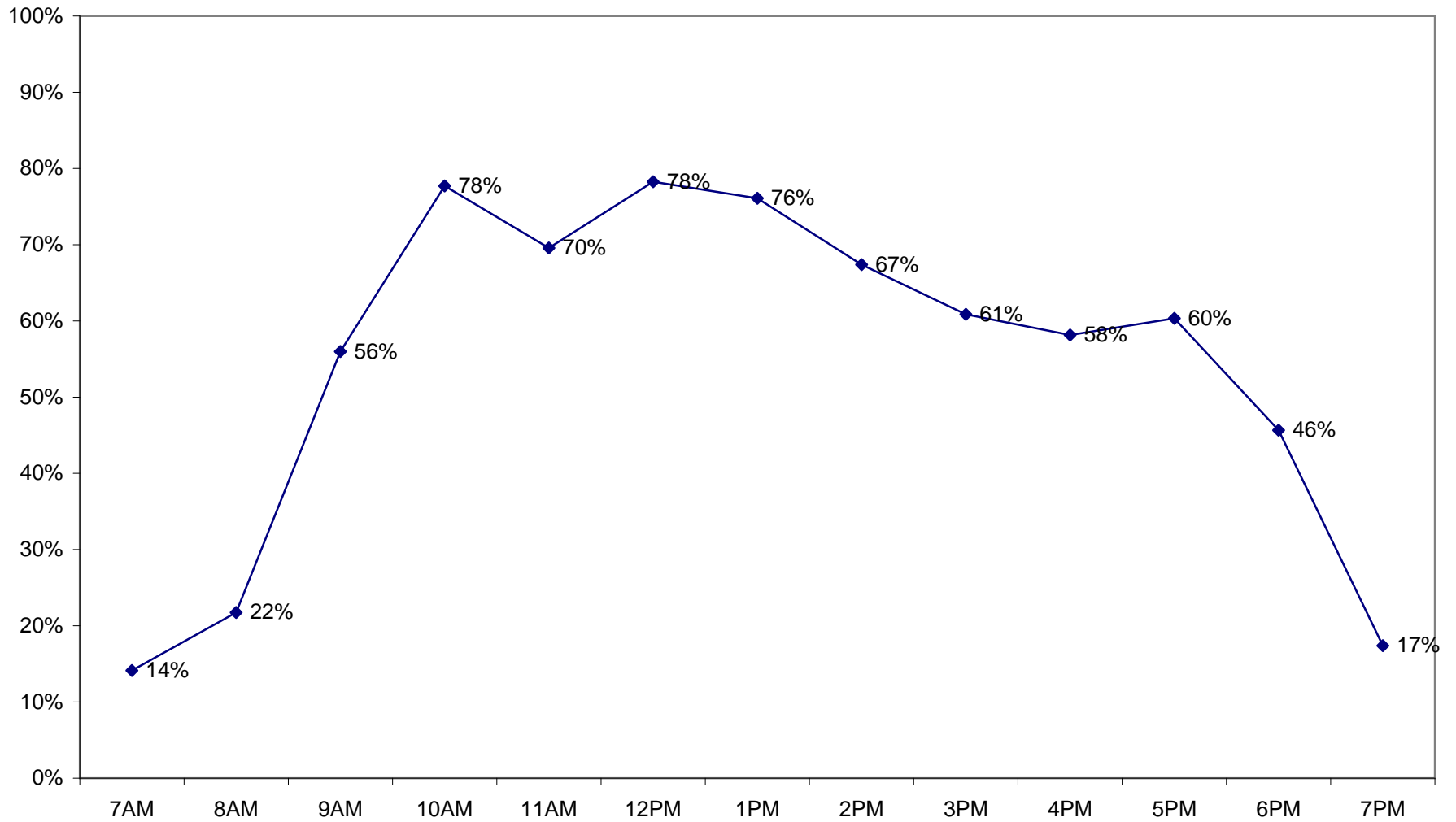
55 Adams Street Lot
Avg. Occupancy - 51%
37 total spaces in zone



4 Franklin Street Lot
Avg. Occupancy - 38%
47 total spaces in zone



Milton Market Place Lot
Avg. Occupancy - 54%
184 total spaces in zone



Municipal Lot at Milton Market Place
Avg. Occupancy - 84%
34 total spaces in zone

